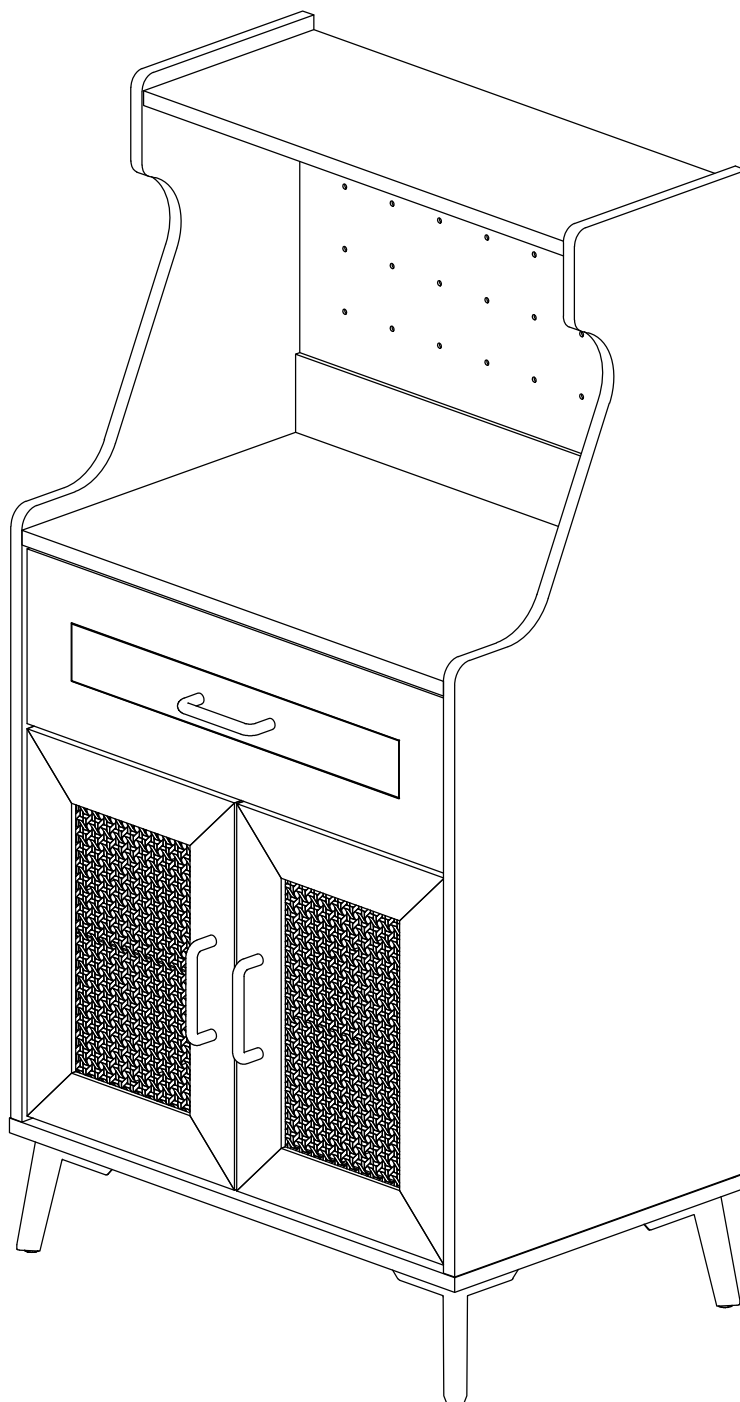


Assembly Instruction

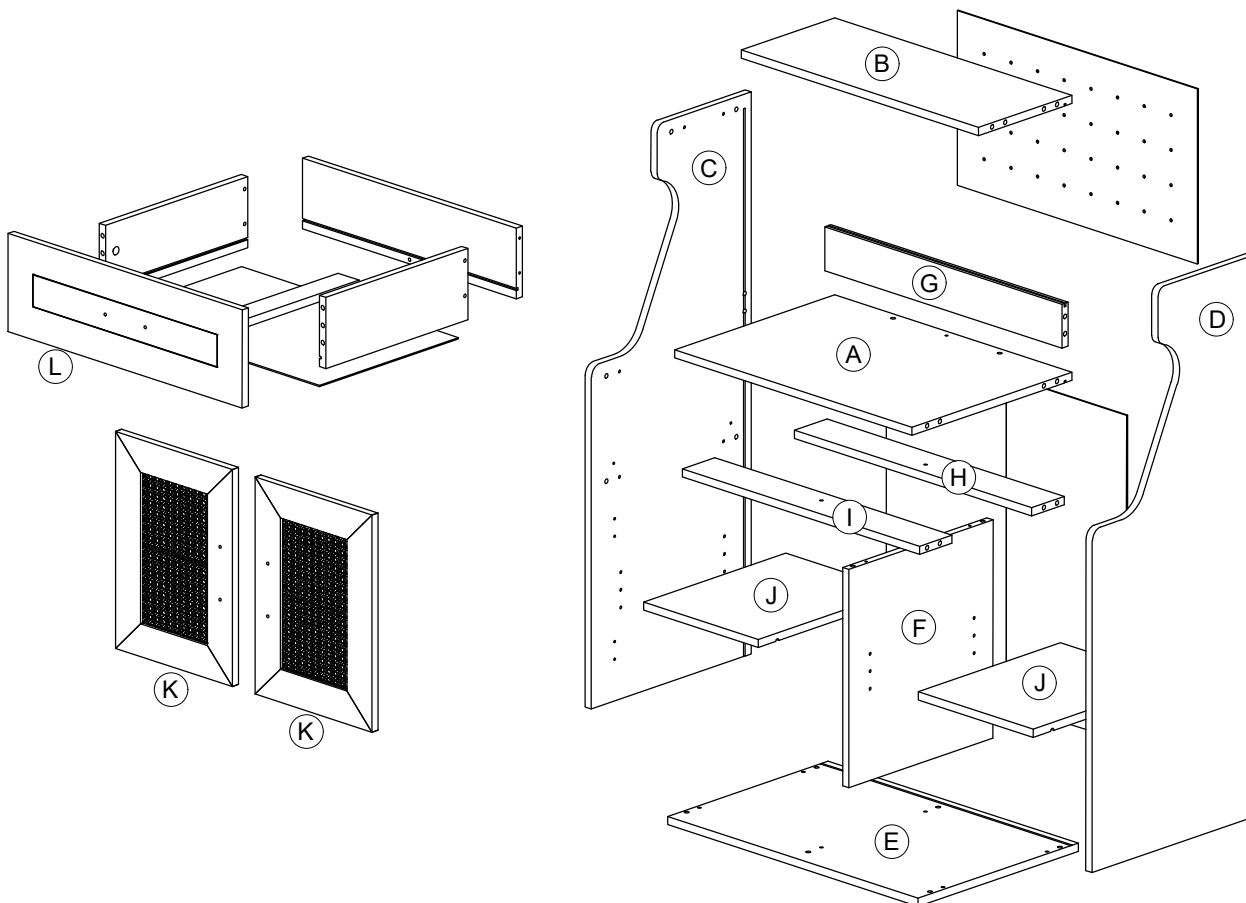
WI14025



Assembly Instruction

Part List

<i>Part List</i>		<i>Qty.</i>
A	Top Panel-B	1 Pc
B	Top Panel-S	1 Pc
C	Side Panel-L	1 Pc
D	Side Panel-R	1 Pc
E	Bottom Panel	1 Pc
F	Stand Panel	1 Pc
G	Back Crossbar (Upper)	1 Pc
H	Back Crossbar (Lower)	1 Pc
I	Front Crossbar (Lower)	1 Pc
J	Adjust Panel	2 Pcs
K	Door	2 Pcs
L	Drawer Front Panel	1 Pc
	Drawer Side Panel-L	1 Pc
	Drawer Side Panel-R	1 Pc
	Drawer Back Panel	1 Pc
	Drawer Crossbar	1 Pc
	Drawer Bottom Panel	1 Pc
	Back Panel (Upper)	1 Pc
	Back Panel (Lower)	2 Pcs








Assembly Instruction

Hardware List

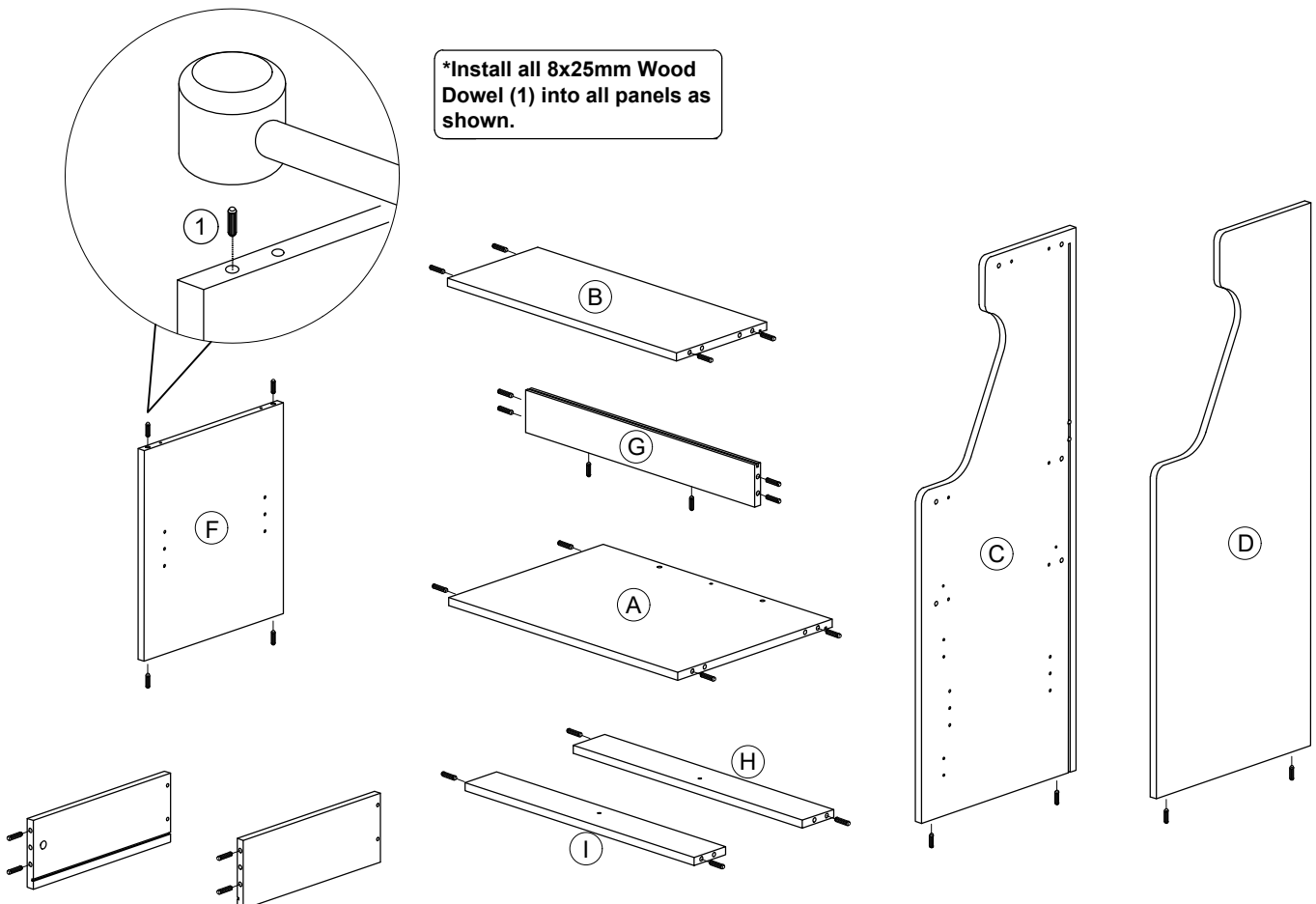
No.	SHAPE	DESCRIPTION	Qty.
1		8x25mm Wood Dowel	30 Pcs
2		15MM Myfix Minifix	16 Sets
3		M5x40mm Screw	13 Pcs
4		HG5010 / HINGES 010	4 Pcs
5		M3.5x16mm Screw	48 Pcs
6		Z Bracket	4 Pcs
7		M3x16mm Screw	8 Pcs
8		Shelf Support	8 Pcs
9		Drawer Slide 14" (350mm)	1 Set

10		M5x8mm Screw (Euro Screw)	4 Pcs
11		Minifix Cap	6 Pcs
12		HD8522 / HANDLE PVC	3 Pcs
13		M4x30mm Screw	6 Pcs
14		LG9019 AIR PLANE LEG H120	4 Pcs

Packing Tipping Restraint

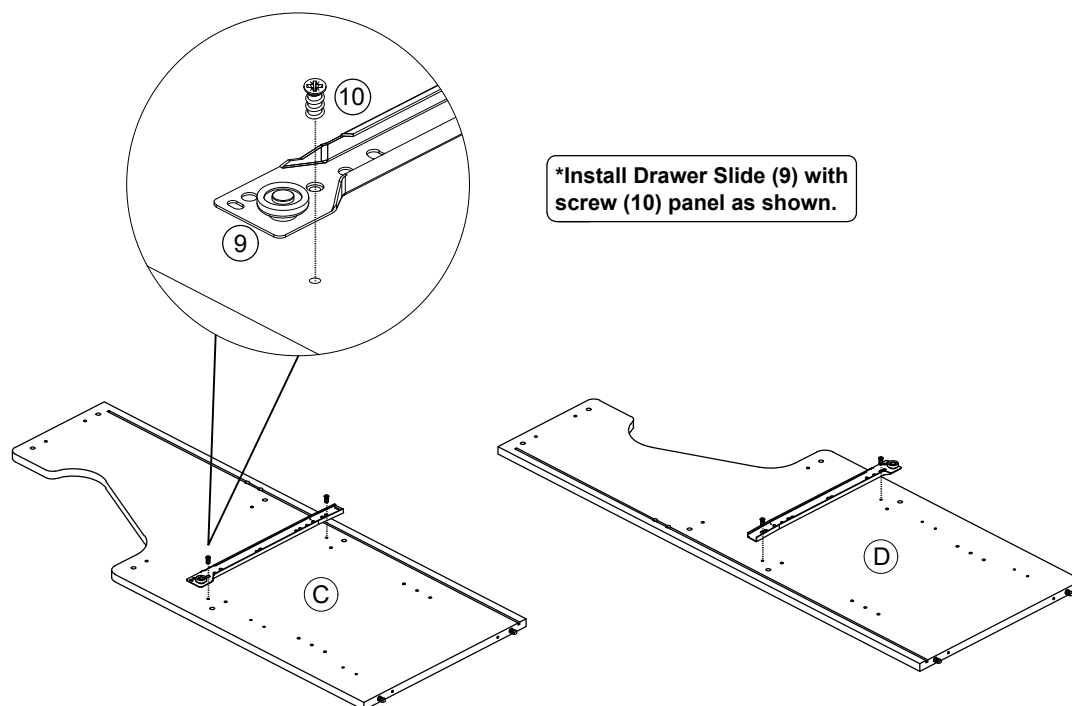
15		M3.5x15mm Screw	2Pcs
16		Wall Plug	2Pcs
17		M4x30mm Screw	2Pcs
18		Safety Strap	2Pcs
19		Flat Washer 6x13x1mm	4Pcs

STEP 1

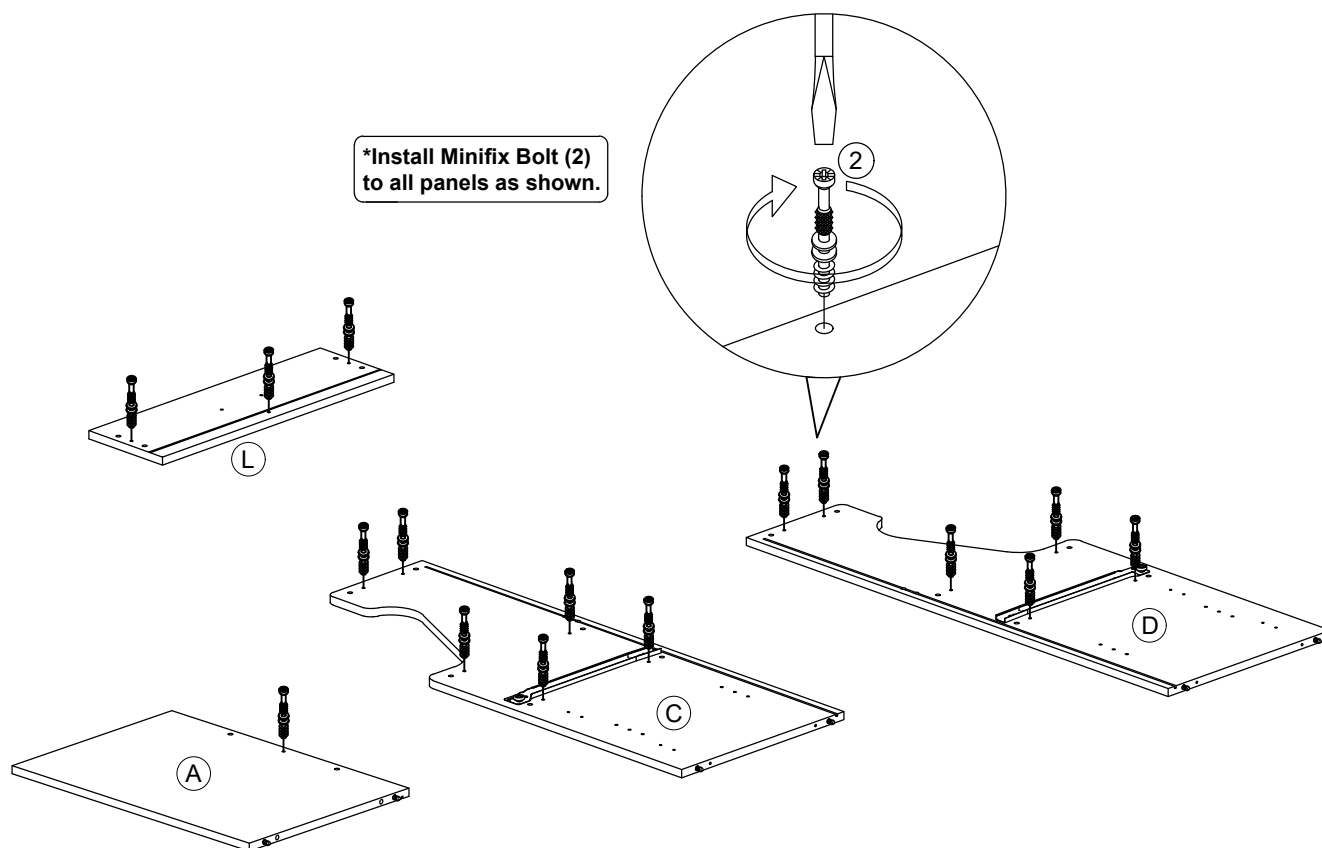


Assembly Instruction

STEP 2

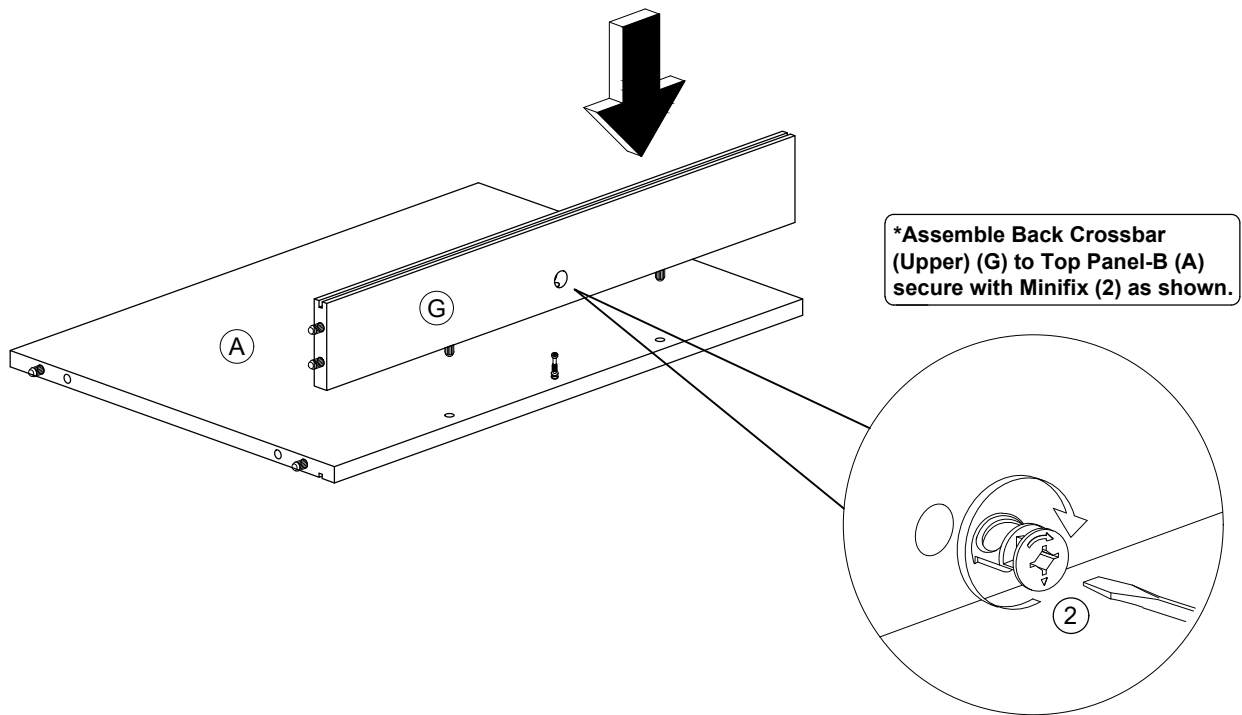


STEP 3

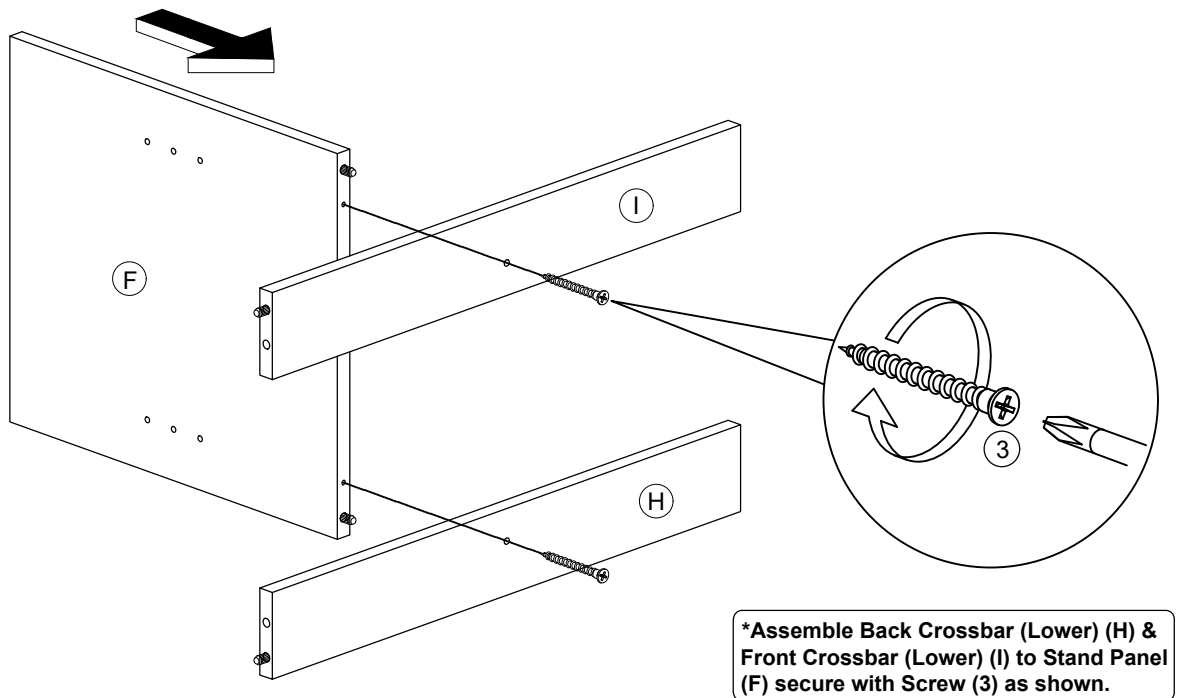


Assembly Instruction

STEP 4



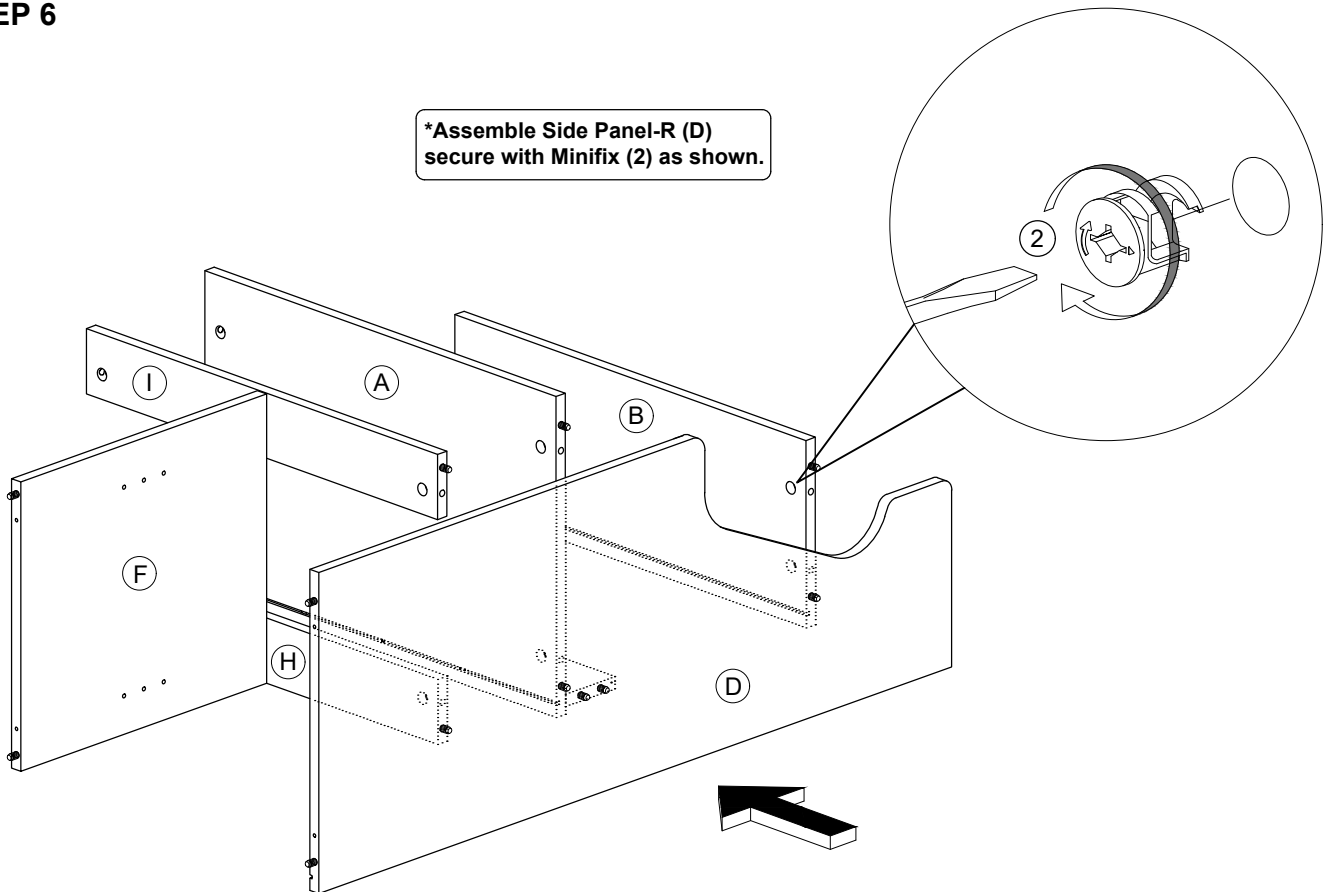
STEP 5



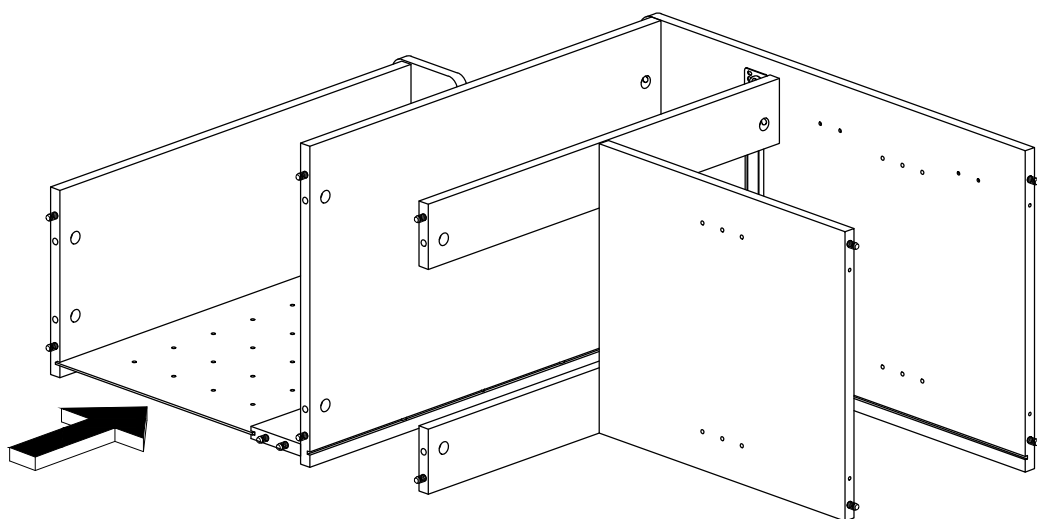
Assembly Instruction

STEP 6

*Assemble Side Panel-R (D)
secure with Minifix (2) as shown.



STEP 7

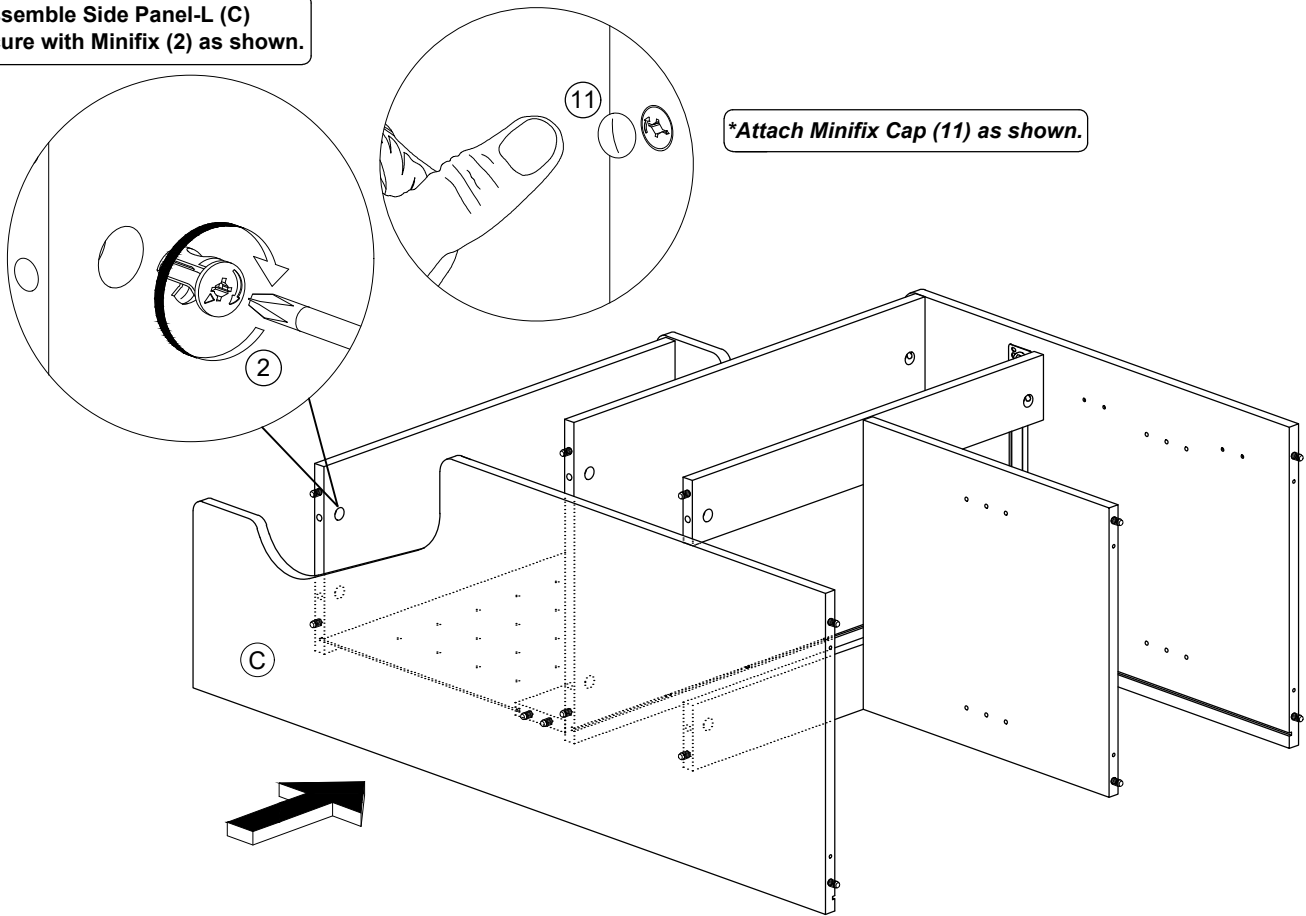


*Insert Back Panel (Upper) as shown.

Assembly Instruction

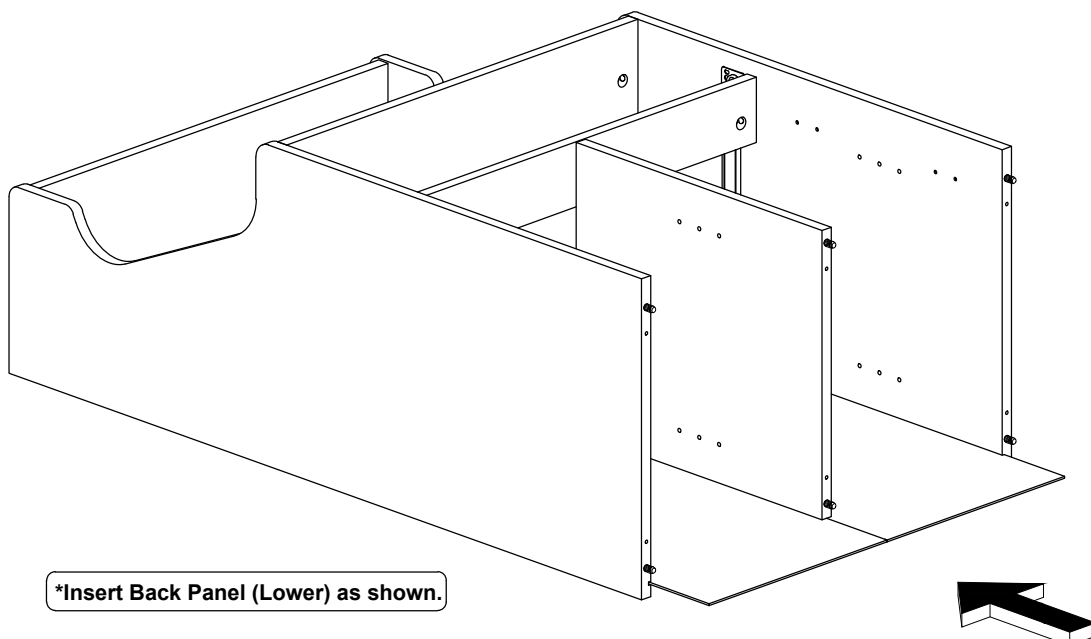
STEP 8

***Assemble Side Panel-L (C) secure with Minifix (2) as shown.**



***Attach Minifix Cap (11) as shown.**

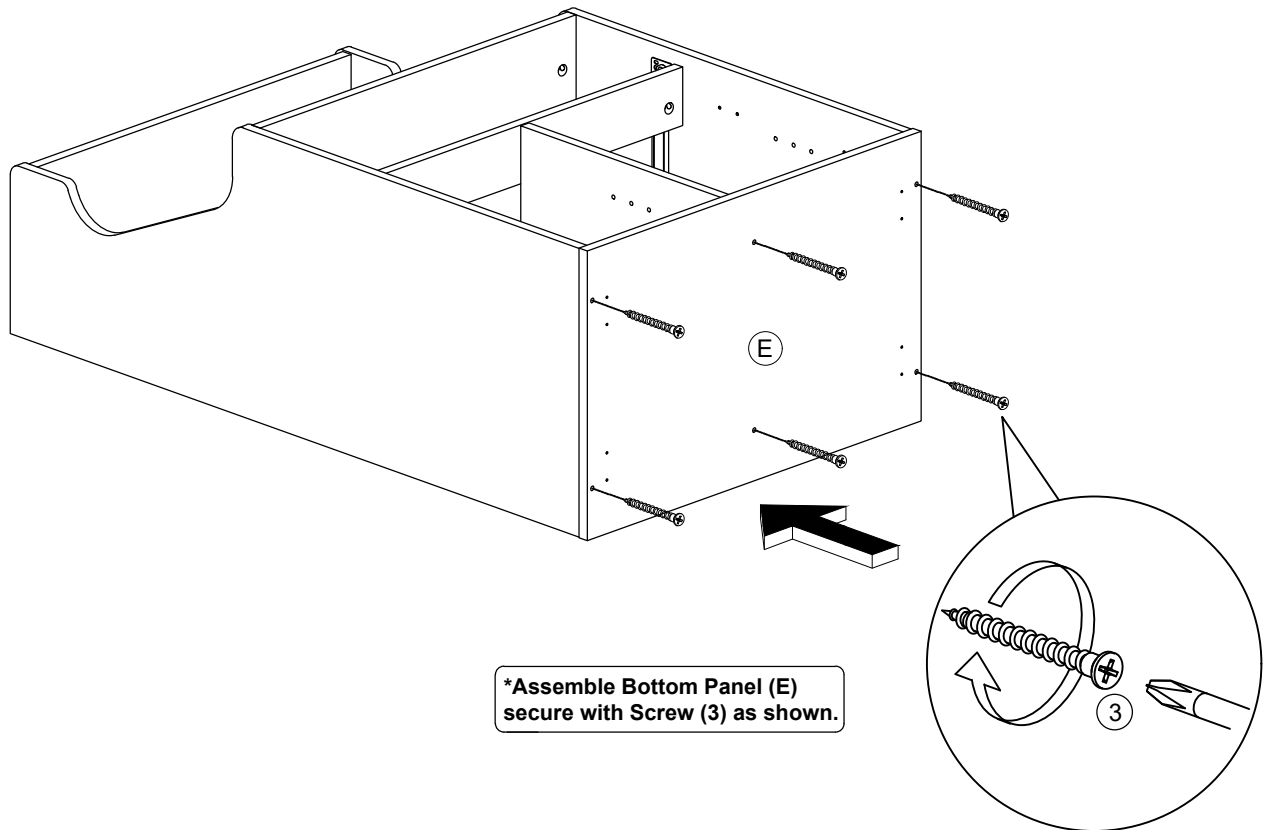
STEP 9



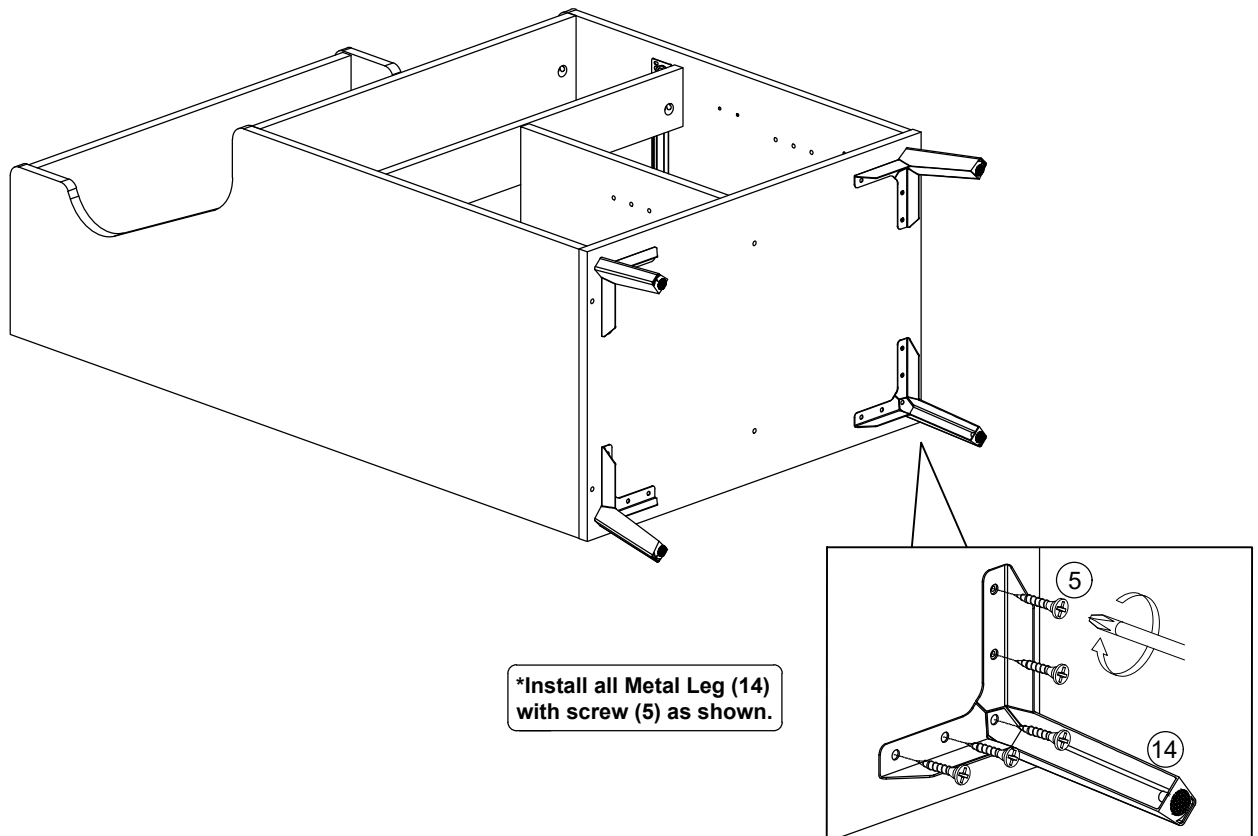
***Insert Back Panel (Lower) as shown.**

Assembly Instruction

STEP 10

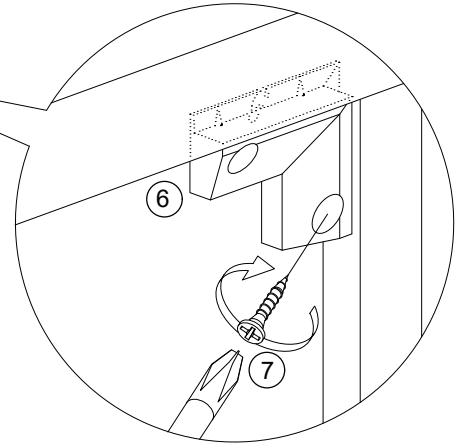
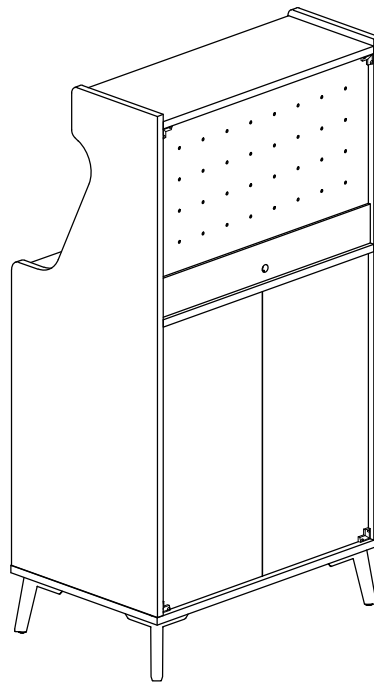


STEP 11



Assembly Instruction

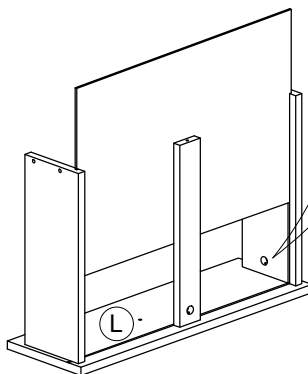
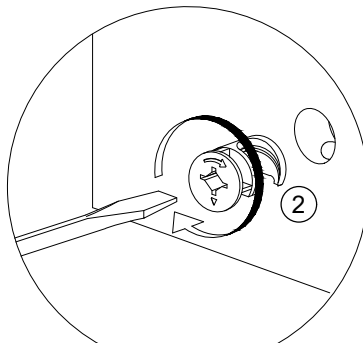
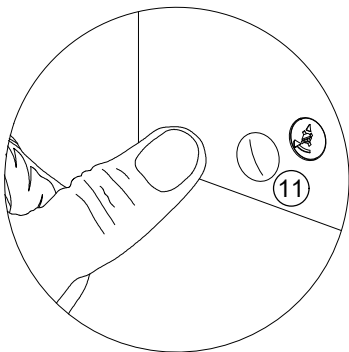
STEP 12



***Install all Z Bracket (6) with screw (7) as shown.**

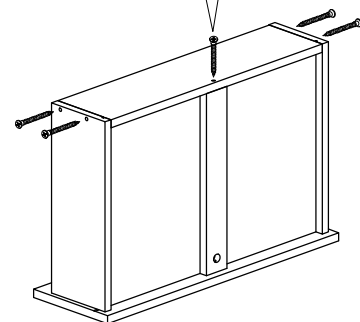
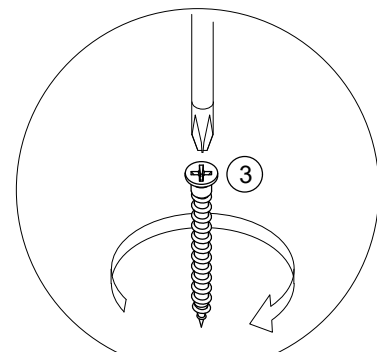
STEP 13

***Attach Minifix Cap (11) as shown.**



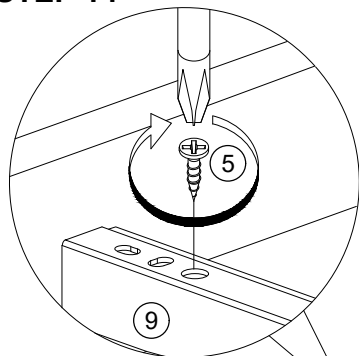
***Assemble Drawer Side Panel-L, Drawer Side Panel-R, Drawer Crossbar & Drawer Bottom Panel to Drawer Front Panel (L) secure with Minifix (2) as shown.**

***Assemble Drawer Back Panel secure with Screw (3) as shown.**

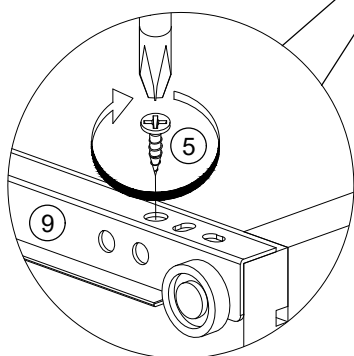
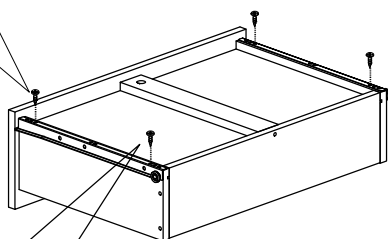


Assembly Instruction

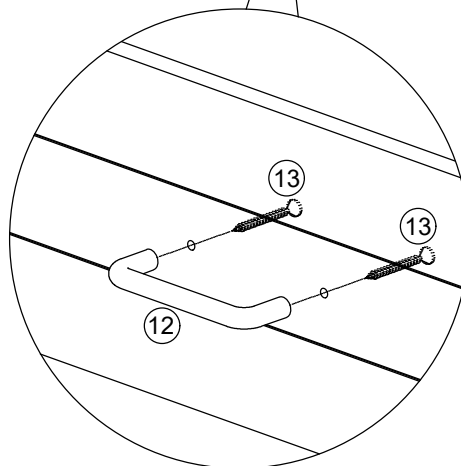
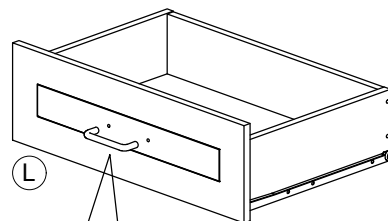
STEP 14



**Install Drawer Slide (9) with Screw (5) as shown.*

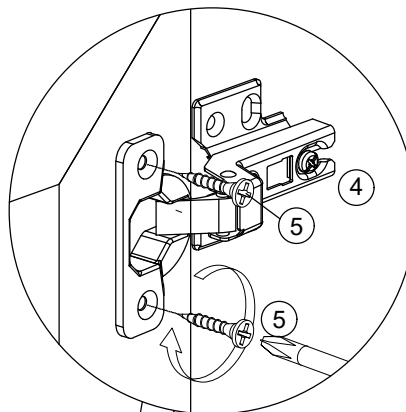
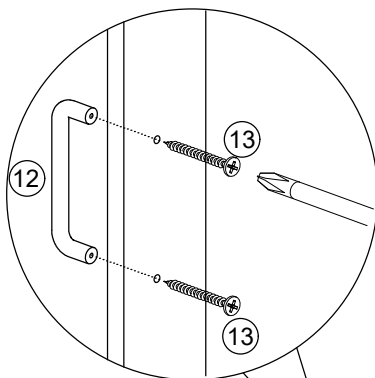


**Install Handle (12) with Screw (13) as shown.*

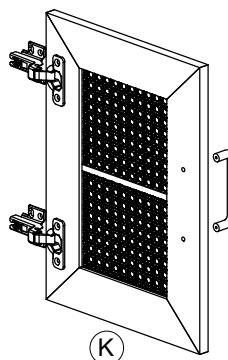
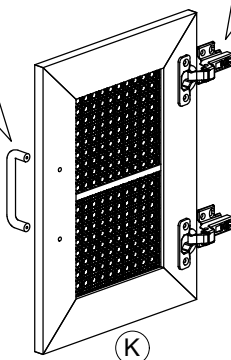


STEP 15

**Install Handle (12) with Screw (13) as shown.*



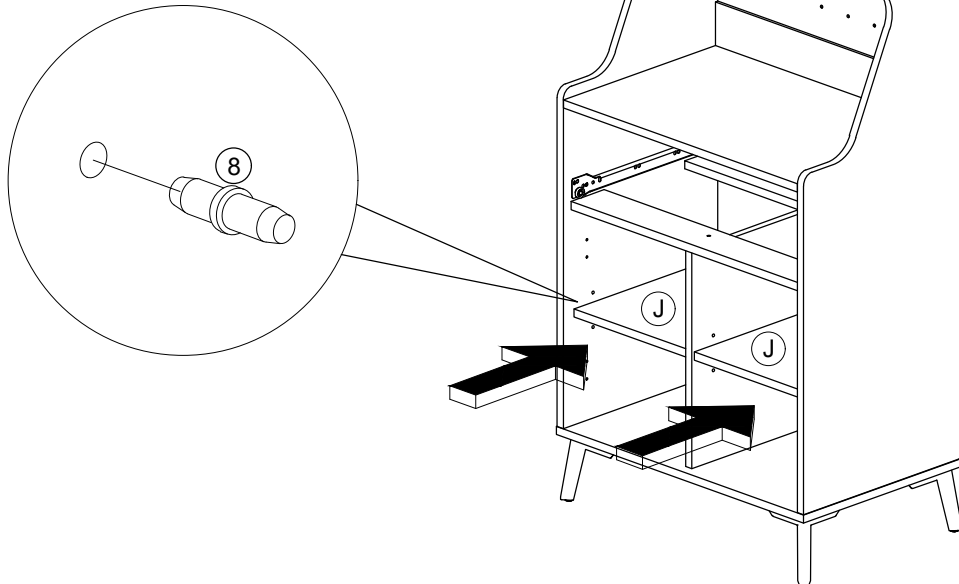
**Install Hinges (4) with Screw (5) to both Doors (K) as shown.*



Assembly Instruction

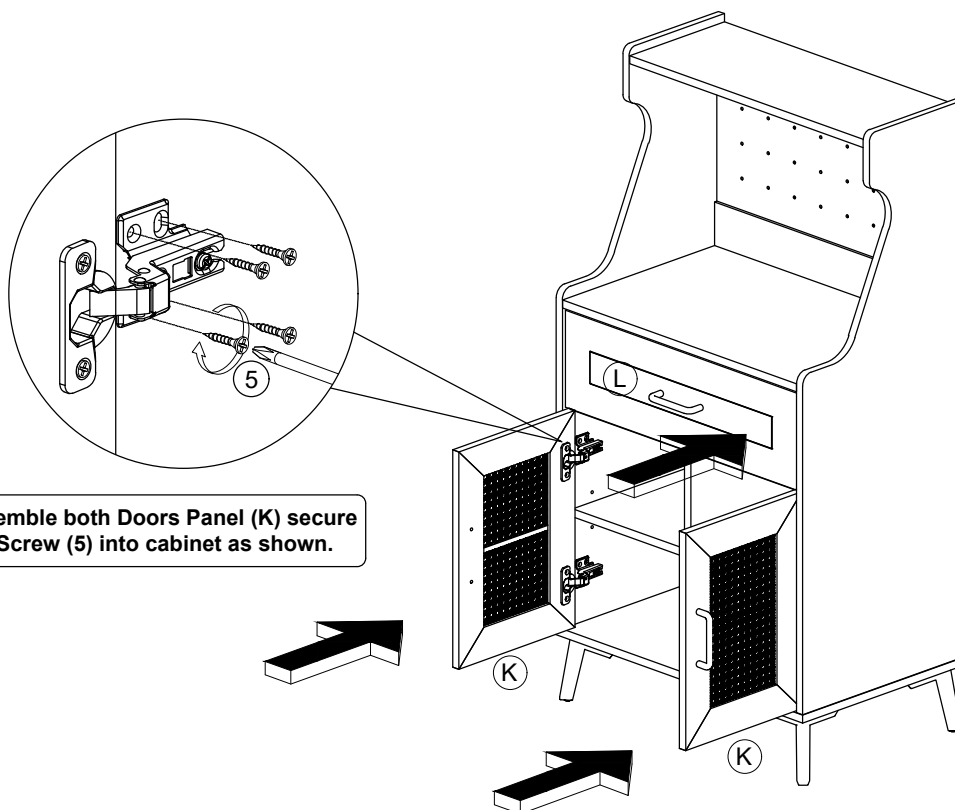
STEP 16

***Attach Shelf Support (8) to all panels as shown.**

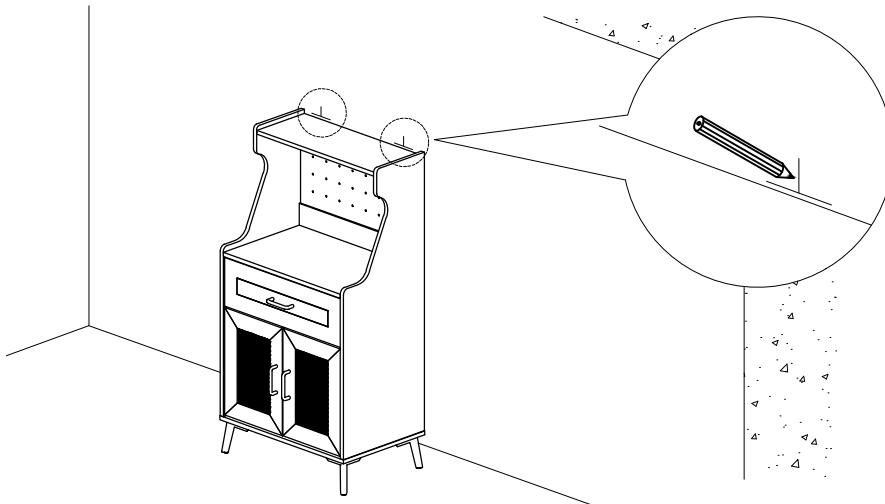


STEP 17

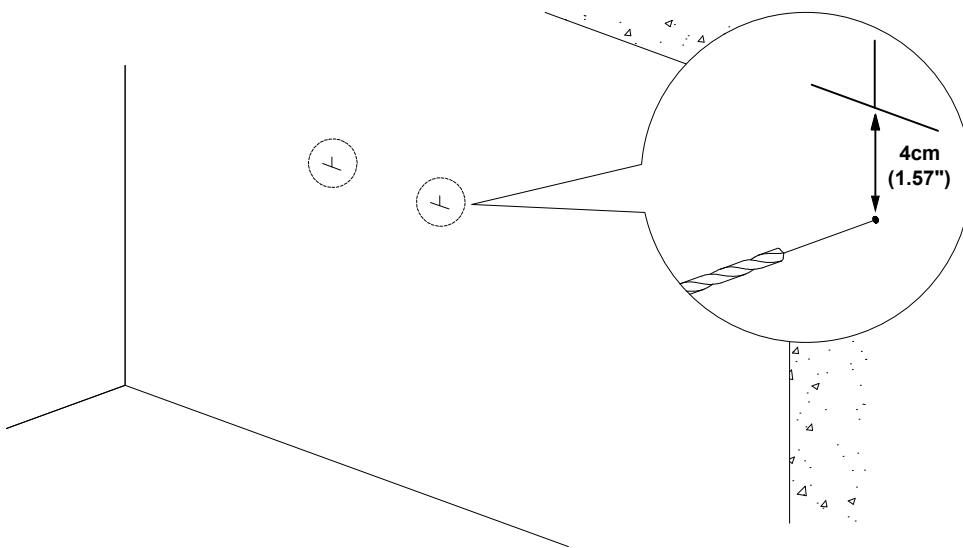
***Assemble both Doors Panel (K) secure with Screw (5) into cabinet as shown.**



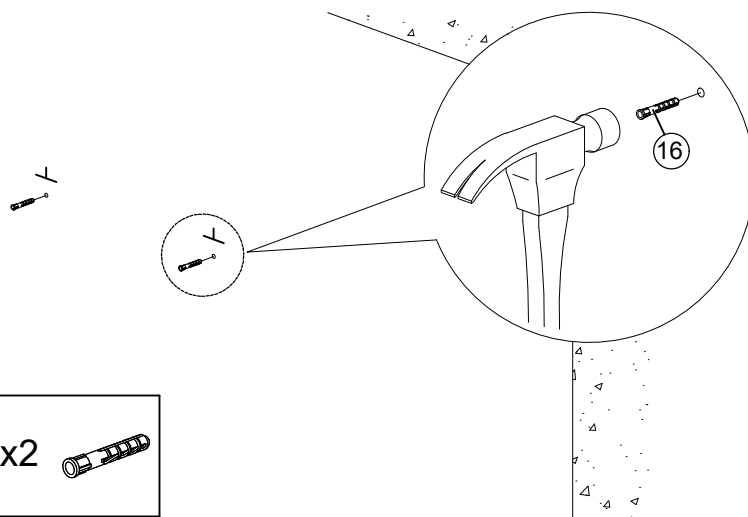
FURNITURE TIPPING RESTRAINT



1. First mark the wall with pencil as in diagram.



2. Drill small hole at the pencil mark.

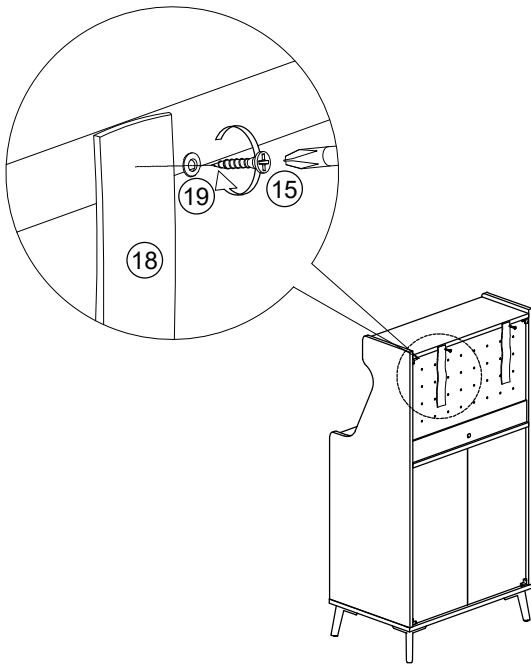


3. Insert plastic wall plug (16).

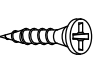


16 x2

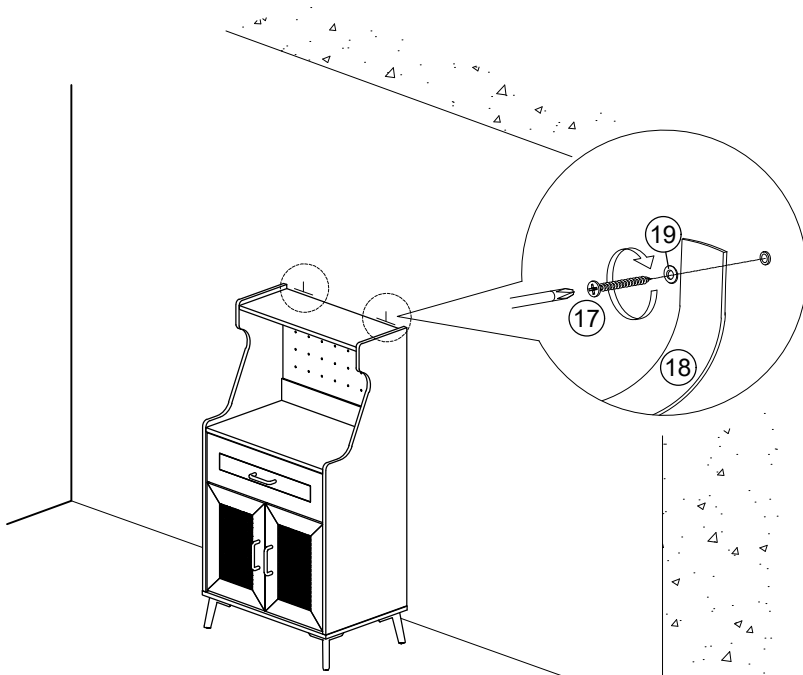


FURNITURE TIPPING RESTRAINT





4. Add safety strap (18), washer (19) using 3.5x15mm screw (15) to back of cabinet.

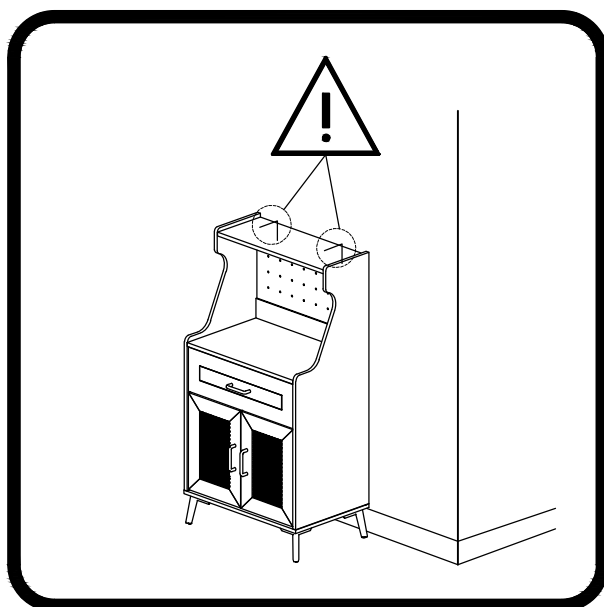
15 x2  M3.5x15mm	18 x2 	19 x2 
---	--	--




5. Finally, attach safety strap (18) and washer (19) using 4x30mm screw (17) to the wall.

17 x2  M4x30mm	19 x2 
--	---

ANTI-TIPPING KIT is provided with the products and it is required for assembly, any accident occurs due to failing to fix the product with Anti-tipping is at your own risk



⚠ WARNING	
	Children have died from furniture tipover. To reduce the risk of furniture tipover :
	<ul style="list-style-type: none">• ALWAYS install anti-tip device provided.• NEVER put a TV on this product.• NEVER allow children to stand, climb or hang on any drawers, doors, or shelves.• NEVER open more than one drawer at a time.• Place heaviest items in the lowest drawers.
<i>This is a permanent label. Do not remove!</i>	



Anti-Topple hardware included for added safety and stability