

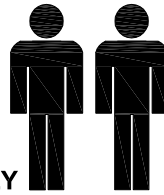
MODEL NAME:

CA 6311-00

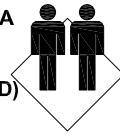
90min

APPROXIMATE ASSEMBLY TIME

2 PEOPLE FOR ASSEMBLY

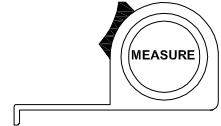
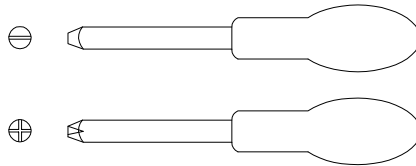
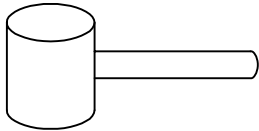


FLOOR AREA
2.2M X 1.0M
(FLAT BUILD)



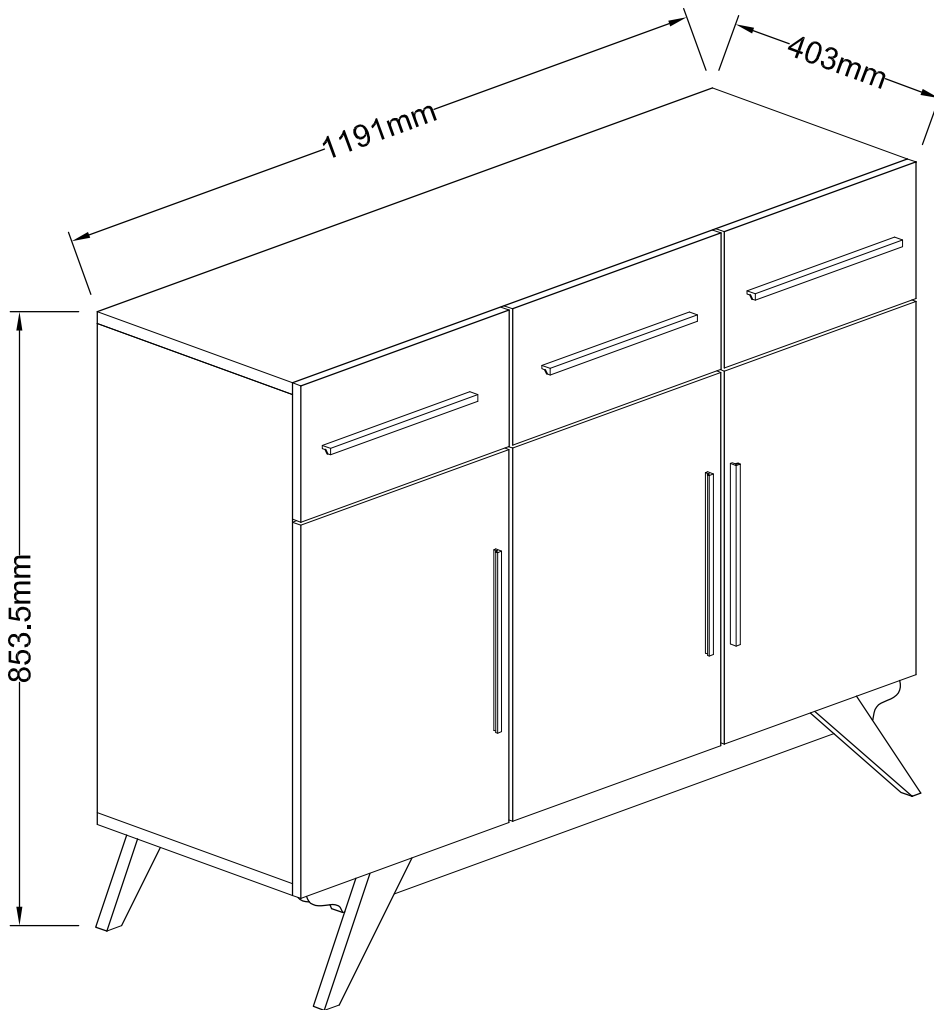
CEILING HEIGHT
2.2M

REQUIRED ASSEMBLY SPACE



REQUIRED ASSEMBLY TOOLS

ASSEMBLED DIMENSIONS



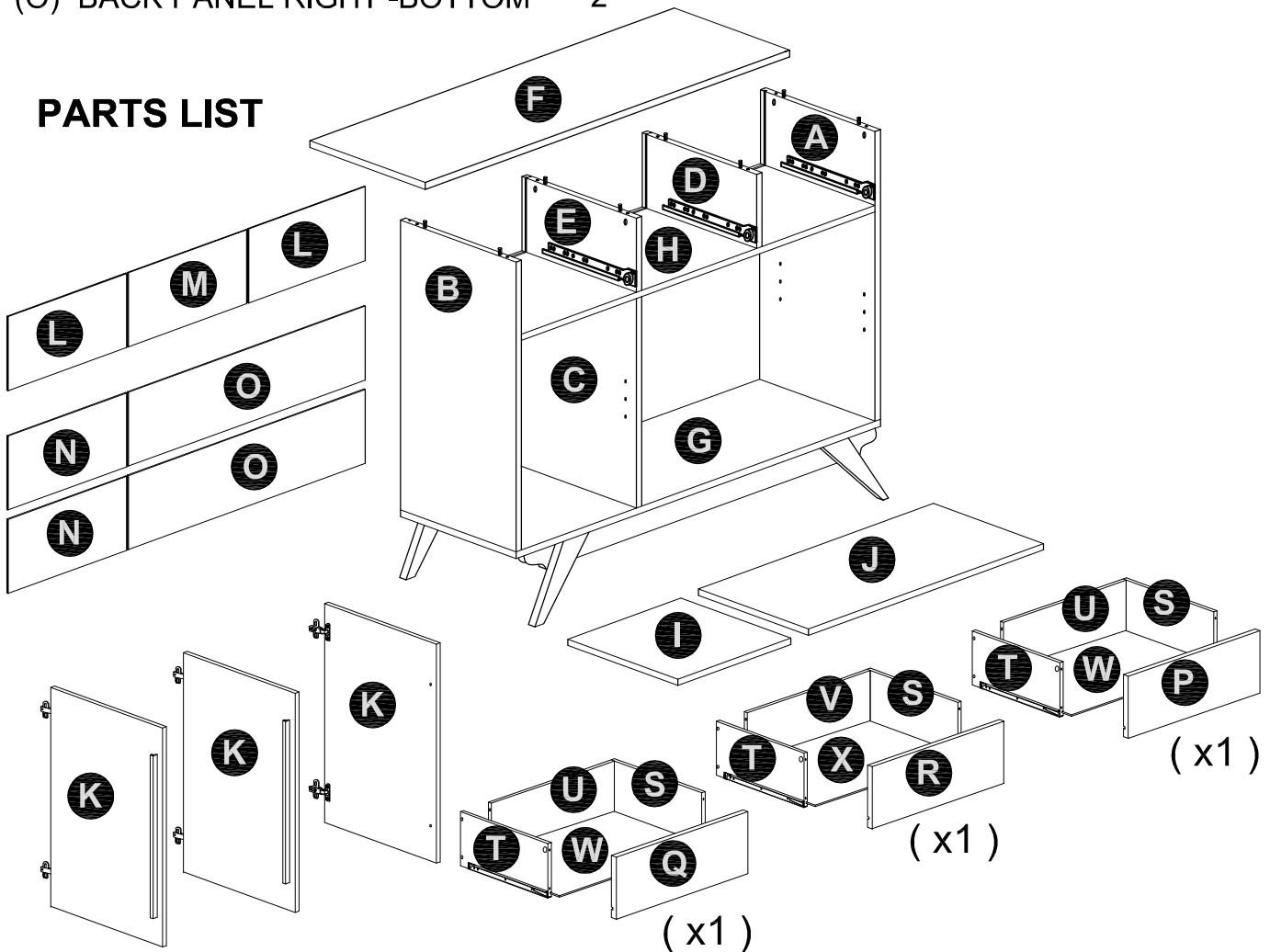
NOTE : THE MAXIMUM WEIGHT THIS PRODUCT CAN HOLD UP TO IS 25 KGS.

MODEL NAME:

CA 6311-00

NO.	PART LIST	QTY	NO.	PART LIST	QTY
(A)	RIGHT SIDE PANEL	1	(P)	DRAWER FRONT(RIGHT)	1
(B)	LEFT SIDE PANEL	1	(Q)	DRAWER FRONT(LEFT)	1
(C)	CENTRE PANEL(BOTTOM)	1	(R)	DRAWER FRONT(CENTRE)	1
(D)	RIGHT CENTRE PANEL(TOP)	1	(S)	DRAWER SIDE (RIGHT)	3
(E)	LEFT CENTRE PANEL(TOP)	1	(T)	DRAWER SIDE (LEFT)	3
(F)	TOP PANEL	1	(U)	DRAWER BACK PANEL	2
(G)	BOTTOM PANEL	1		(RIGHT & LEFT)	
(H)	FIXED SHELF	1	(V)	DRAWER BACK PANEL (CENTRE)	1
(I)	ADJUSTABLE PANEL - SMALL	1	(W)	DRAWER BASE (RIGHT&LEFT)	2
(J)	ADJUSTABLE PANEL - LARGE	1	(X)	DRAWER BASE (CENTRE)	1
(K)	DOOR PANEL	3			
(L)	BACK PANEL RIGHT & LEFT -TOP	2			
(M)	BACK PANEL CENTRE -TOP	1			
(N)	BACK PANEL LEFT -BOTTOM	2			
(O)	BACK PANEL RIGHT -BOTTOM	2			

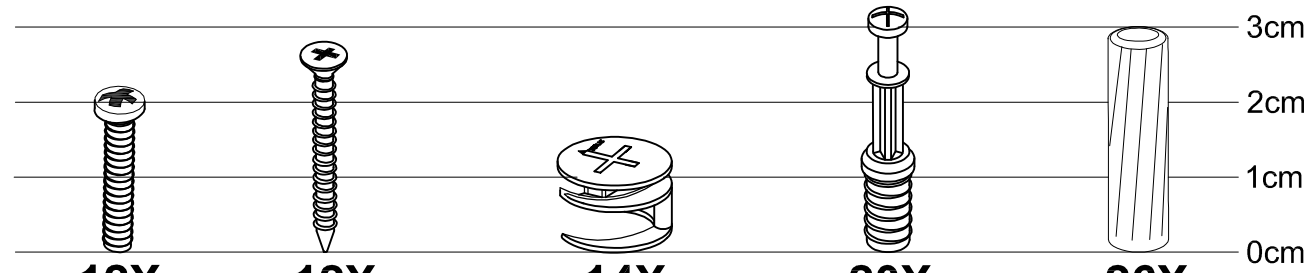
PARTS LIST



MODEL NAME:

CA 6311-00

HARDWARE LIST



12X

M4 x 19mm

1

PAN HEAD
BOLT

12X

M3.5 x 25mm

2

FLAT HEAD
SCREW

14X

Dia.15mm

3

CAM-LOCK

20X

M6.5

4

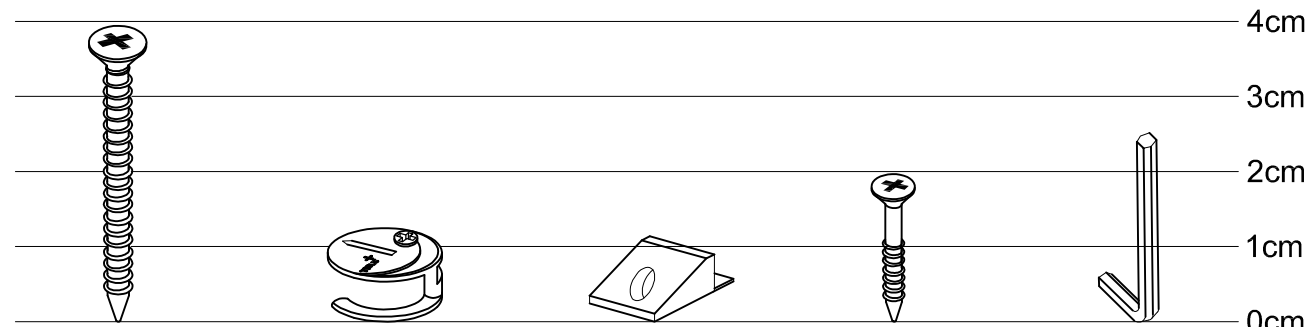
CAM BOLT

26X

Dia.6 x 30mm

5

WOOD
DOWEL



10X

M8 x 38mm

6

FLAT HEAD
SCREW

6X

Dia.15mm

7

DRAWER
CAM-LOCK

20X

8

BACKPLY
STOPPER

20X

M3 x 20mm

9

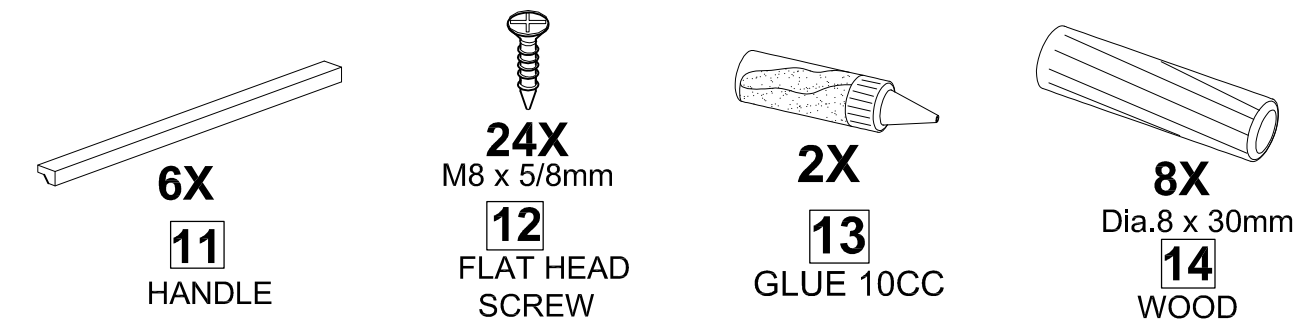
FLAT HEAD
SCREW

1X

M4

10

ALLEN KEY



6X

11

HANDLE

24X

M8 x 5/8mm

12

FLAT HEAD
SCREW

2X

13

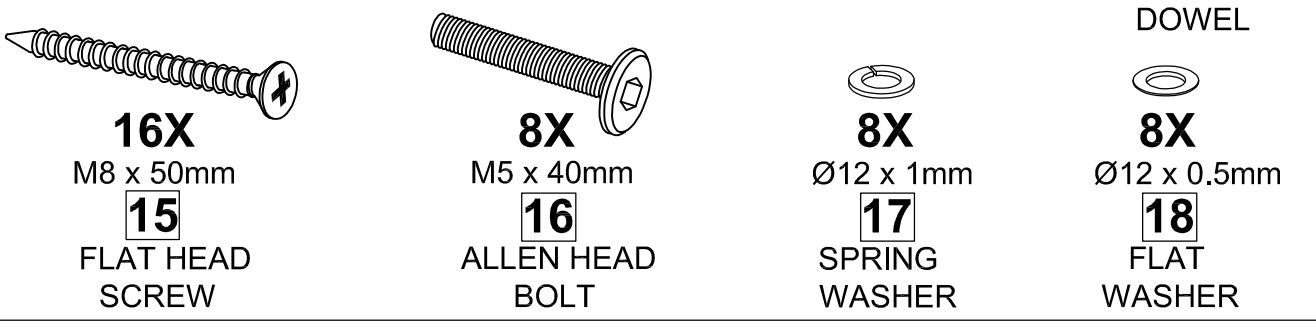
GLUE 10CC

8X

Dia.8 x 30mm

14

WOOD
DOWEL



16X

M8 x 50mm

15

FLAT HEAD
SCREW

8X

M5 x 40mm

16

ALLEN HEAD
BOLT

8X

Ø12 x 1mm

17

SPRING
WASHER

8X

Ø12 x 0.5mm

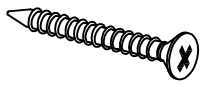
18

FLAT
WASHER

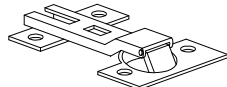
MODEL NAME:

CA 6311-00

HARDWARE LIST



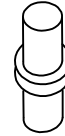
12X
M8 x 32mm
19
FLAT HEAD
SCREW



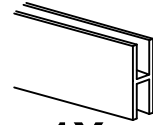
6X
20
ADJUSTABLE
HINGE



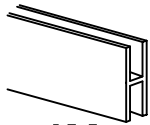
3X
21
DOOR
SOFT CLOSED



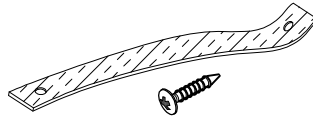
8X
Dia.5 x 16mm
22
SHELF
STUB



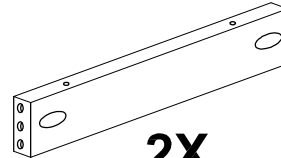
1X
23
PVC H
(767mm)



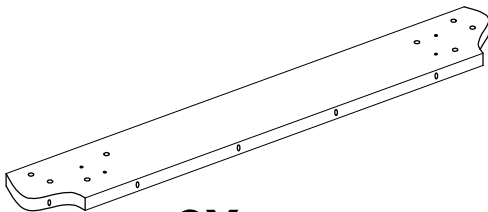
1X
24
PVC H
(370mm)



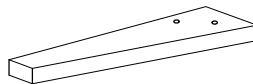
2X
25
ANTI TIP STRAP



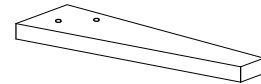
2X
26
SIDE PROFILE
283 x 45 x 20 mm



2X
27
FRONT PROFILE
1148 x 70 x 20 mm



2X
28
RIGHT LEG PROFILE
300 x 70 x 28 mm



2X
29
LEFT LEG PROFILE
300 x 70 x 28 mm

MODEL NAME:

CA 6311-00

Top Tips before you start!

1. Please check that all parts are present before you start the assembly of your furniture.
2. For ease and speed of assembly, we recommend that before you commence each step of the assembly, that you identify all the parts required for that step.
3. For larger items, please ensure that you have sufficient space and people (as indicated on page 1) to assemble your product safely
4. We recommend that, where possible, all items are assembled near to the area in which they will be placed in use, to avoid moving the product unnecessarily once assembled.
5. For the protection of your furniture, particularly items of high gloss finish, we recommend that the product is placed on a protected surface during assembly to prevent any damage.
6. Caution - Electric / Battery operated screw driver NOT RECOMMENDED.
7. During assembly please take care not to over-tighten any fittings, as this may damage the product.
8. Always place the product on a flat, steady and stable surface.
9. Do not sit or stand on the product.
Do not use the product as a stepladder.
10. This product is intended for indoor, household use only as it is non industrial product.
11. This product is constructed from re-inforced hollow board. Excessive pressure cause irreparable damage. Please do not kneel on any part of this product during assembly.

Care and Maintenance of your Furniture

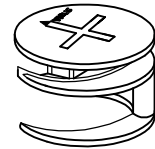
- Please periodically check all fittings and re-tighten as necessary.
- To clean your item, please use a damp cloth and wipe clean.
- Never allow any kind of liquid to remain on your furniture.
- Please do not place hot items (e.g. hot drinks) directly on to the wood surface.
- Please do not drag and pull your furniture.

MODEL NAME:

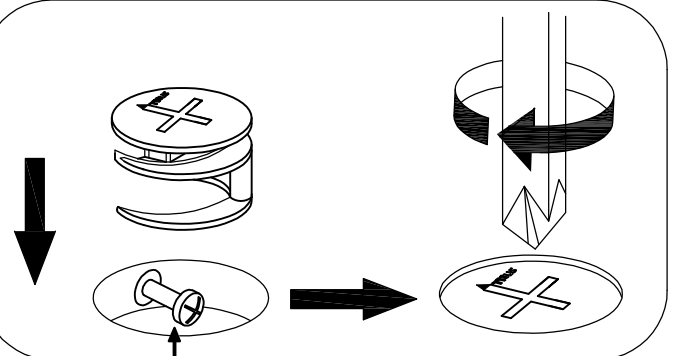
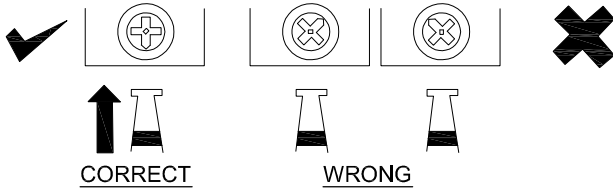
CA 6311-00

SPECIAL TIPS FOR FITTING CAM-LOCKS AND CAM BOLT

CAM-LOCK

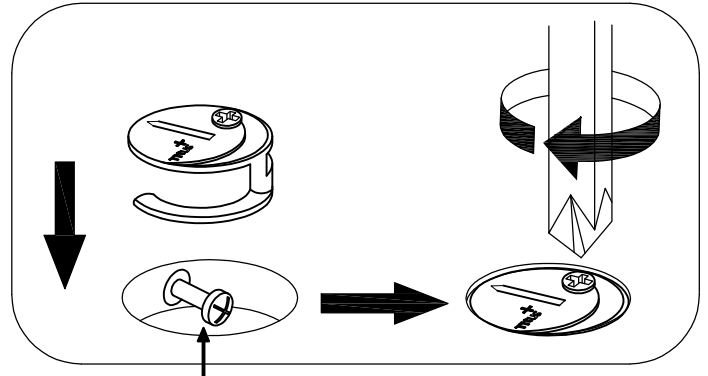


WHEN FITTING CAM-LOCK
ENSURE STARTING POSITION IS CORRECT
BEFORE YOU INSERT CONNECTING CAM BOLT
TURN CLOCKWISE UNTIL SECURE



Cam bolt head needs to be in centre

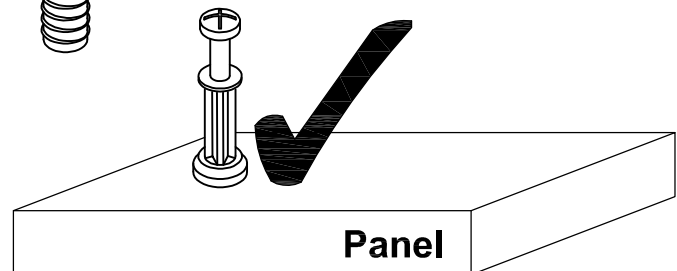
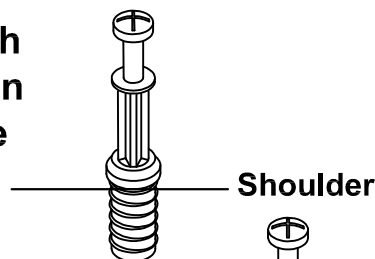
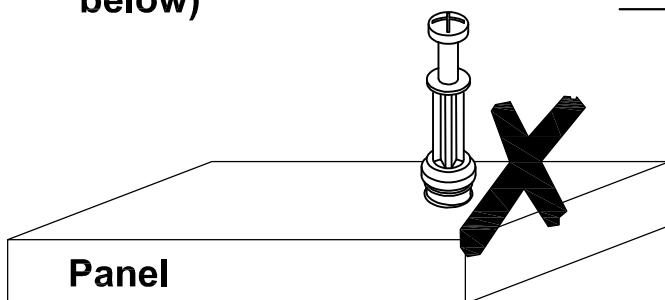
DRAWER
CAM-LOCK



Cam bolt head needs to be in centre

CAM BOLT

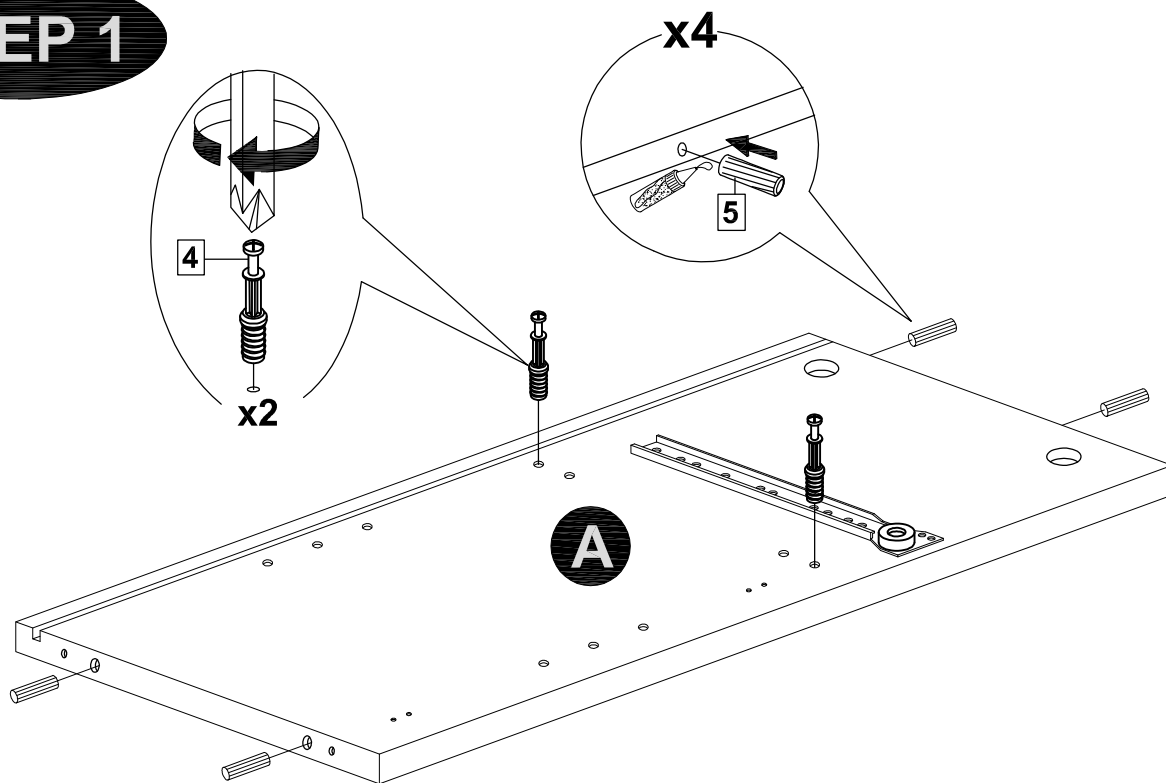
Tighten until shoulder is flush with panel. Do not overtighten or undertighten (see example below)



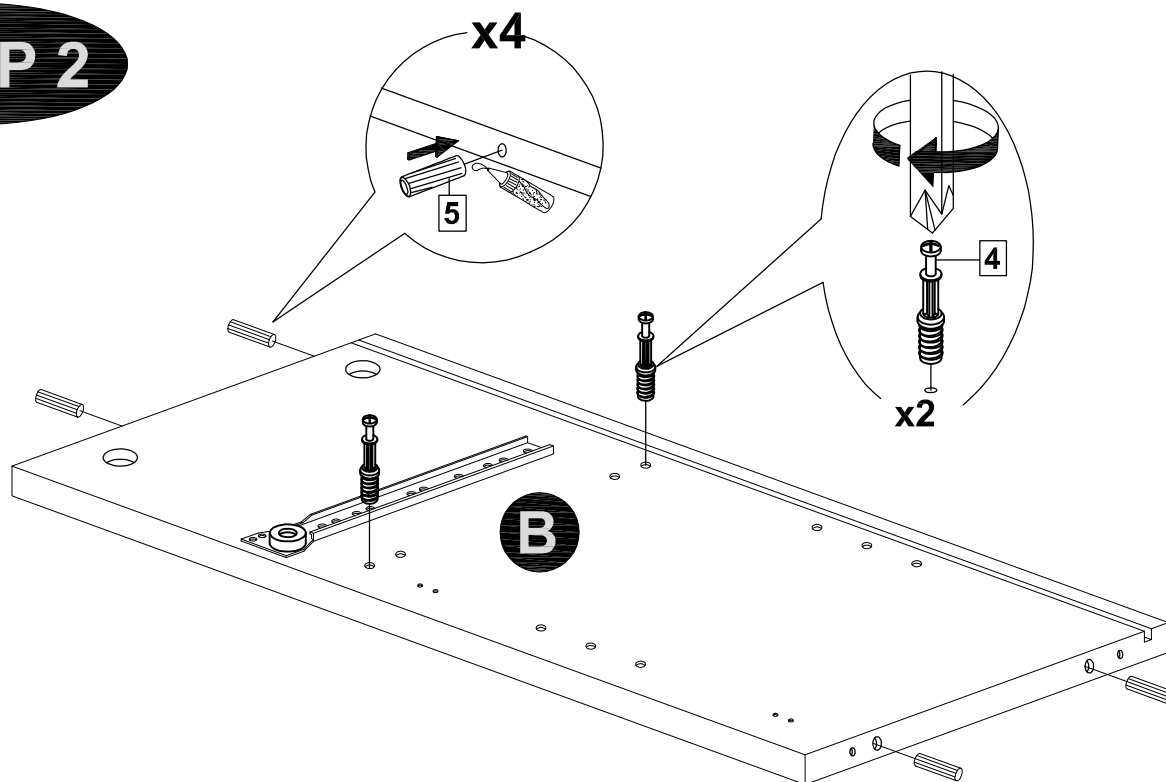
MODEL NAME:

CA 6311-00

STEP 1



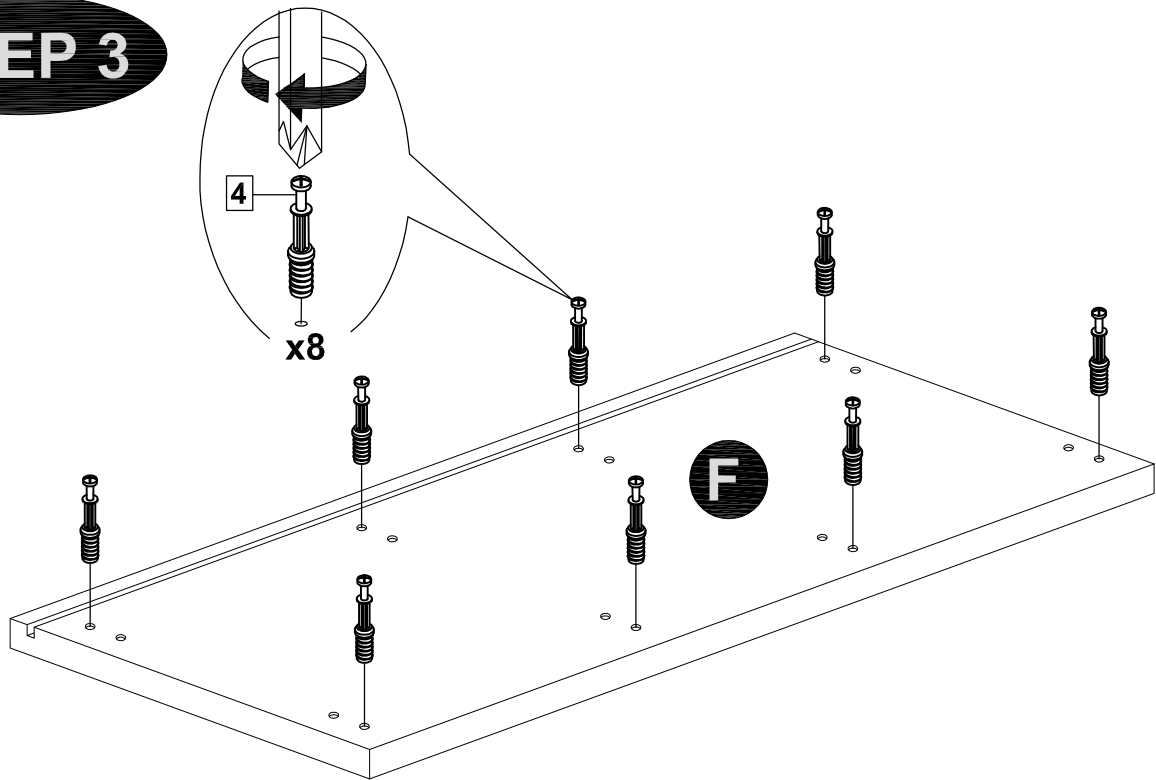
STEP 2



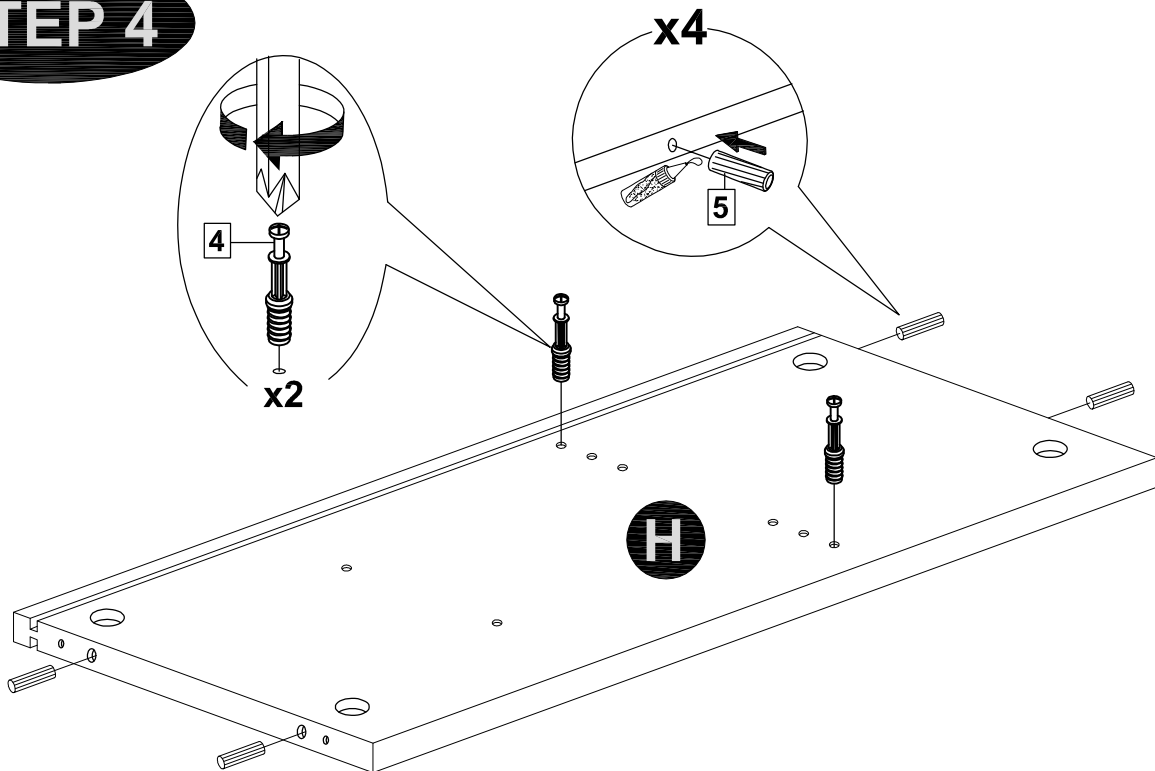
MODEL NAME:

CA 6311-00

STEP 3



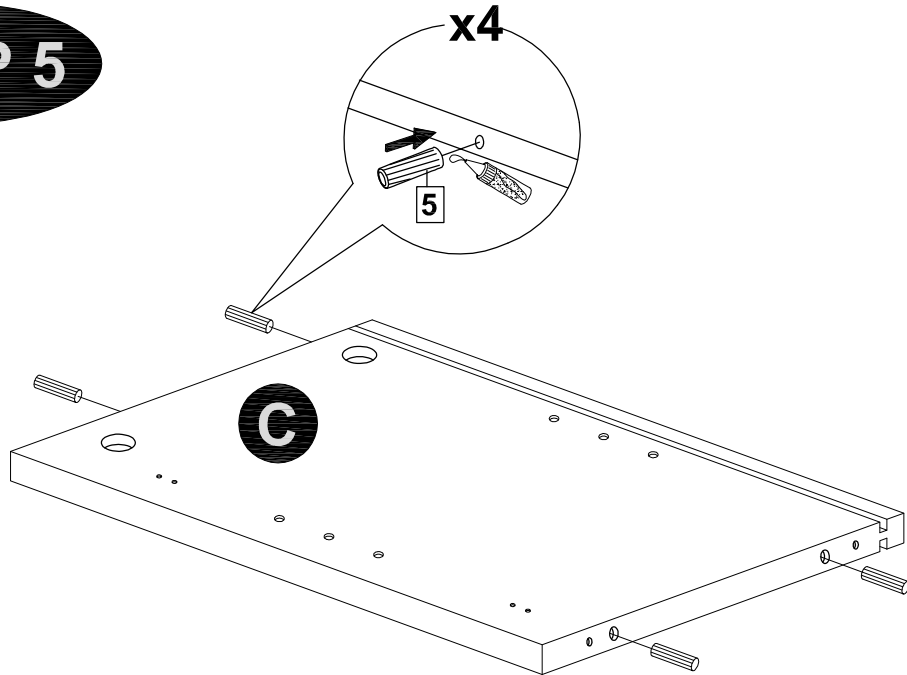
STEP 4



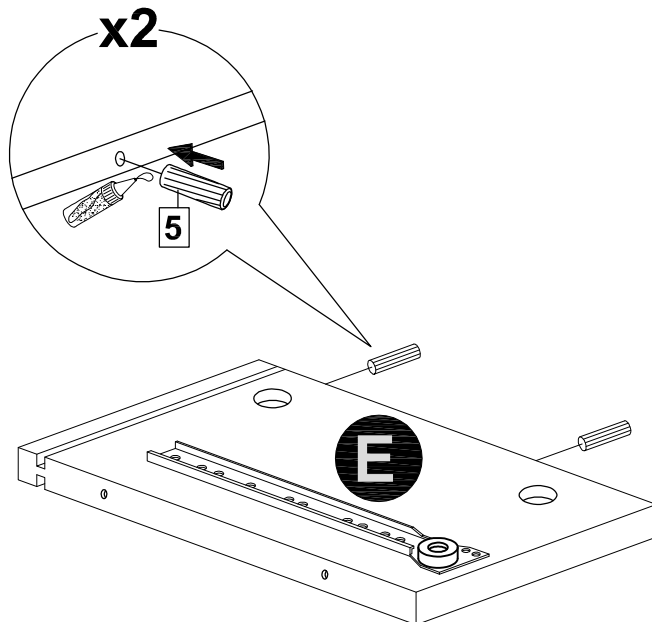
MODEL NAME:

CA 6311-00

STEP 5



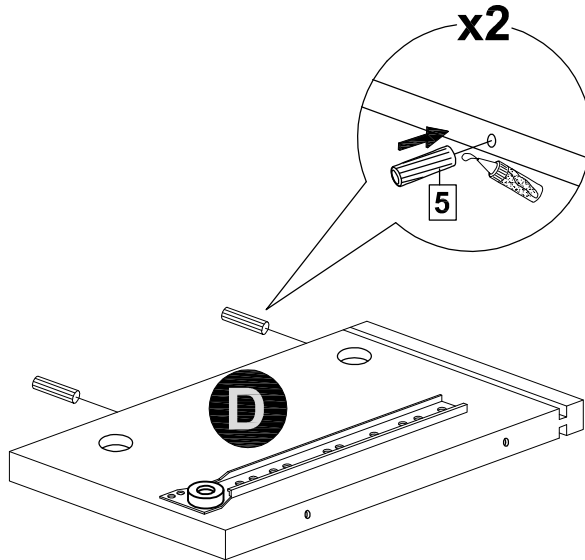
STEP 6



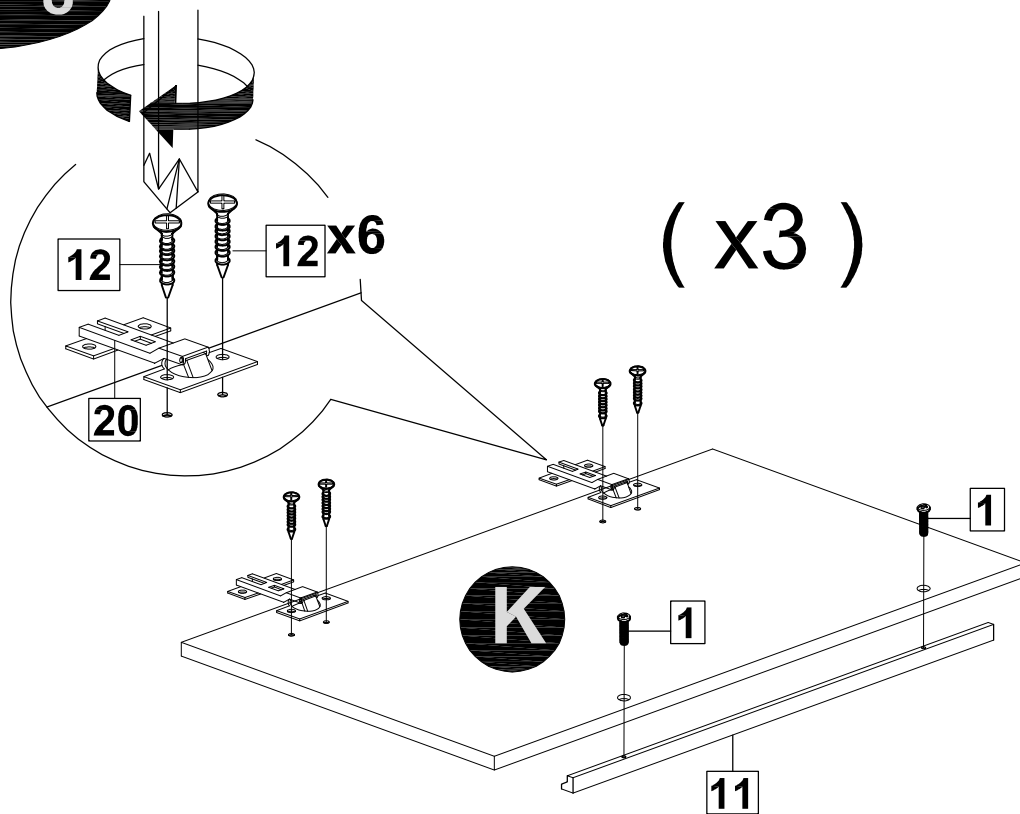
MODEL NAME:

CA 6311-00

STEP 7



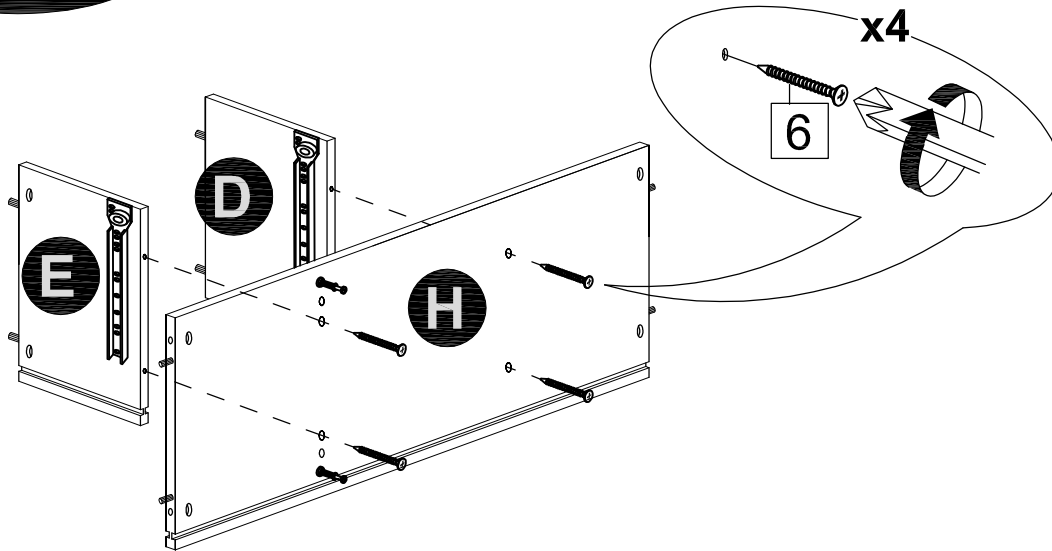
STEP 8



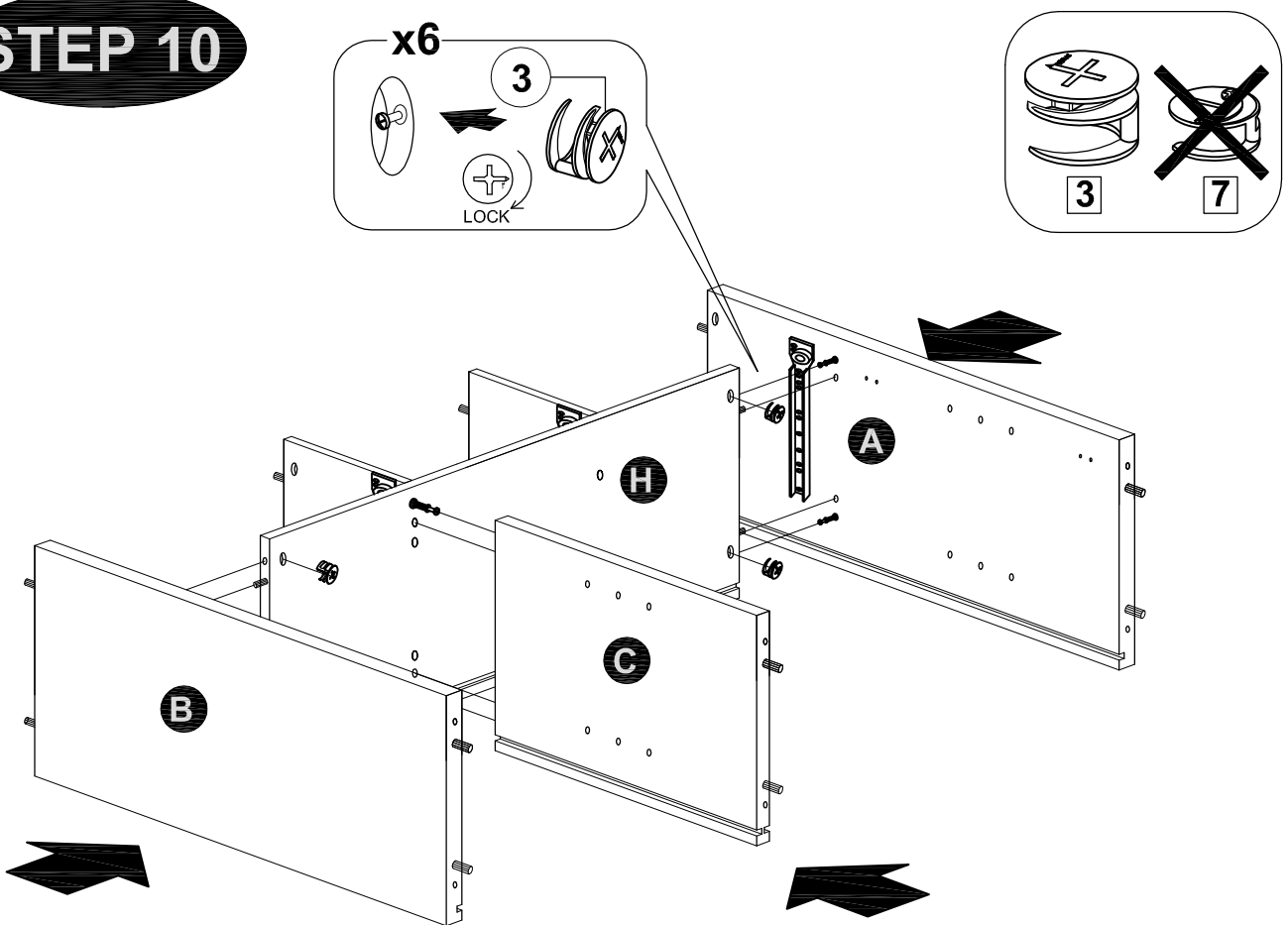
MODEL NAME:

CA 6311-00

STEP 9



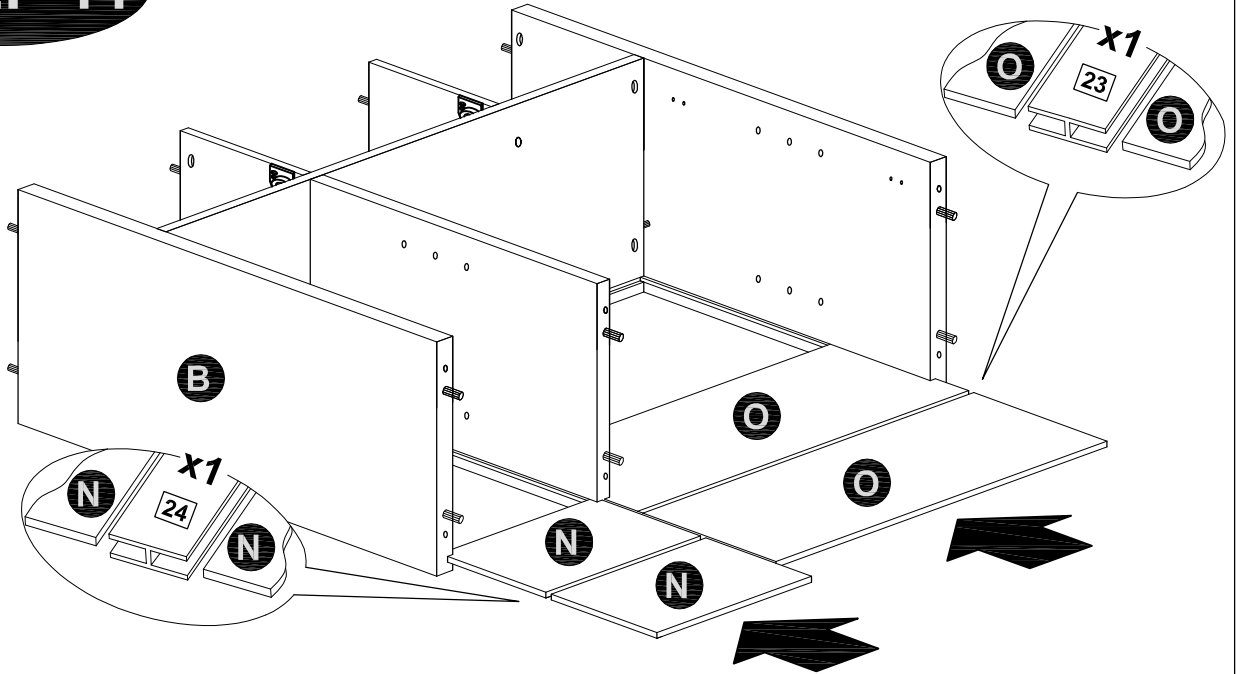
STEP 10



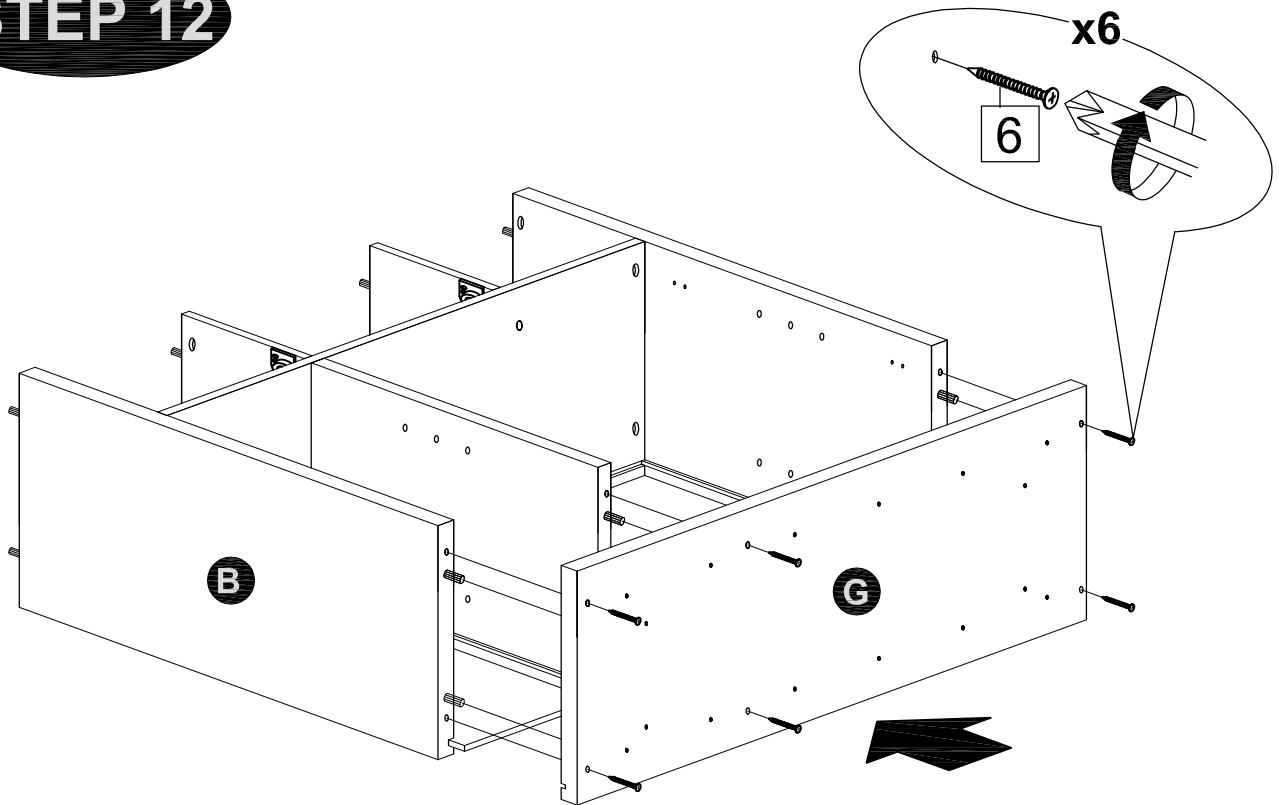
MODEL NAME:

CA 6311-00

STEP 11



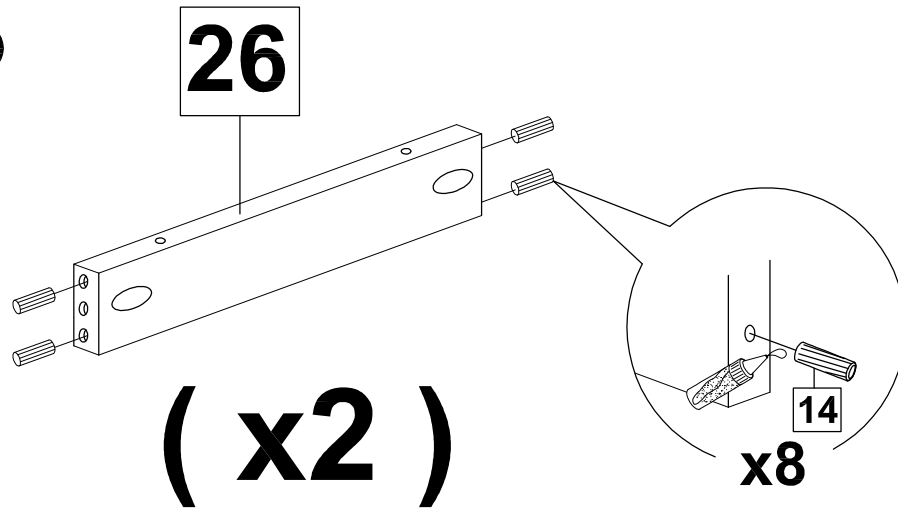
STEP 12



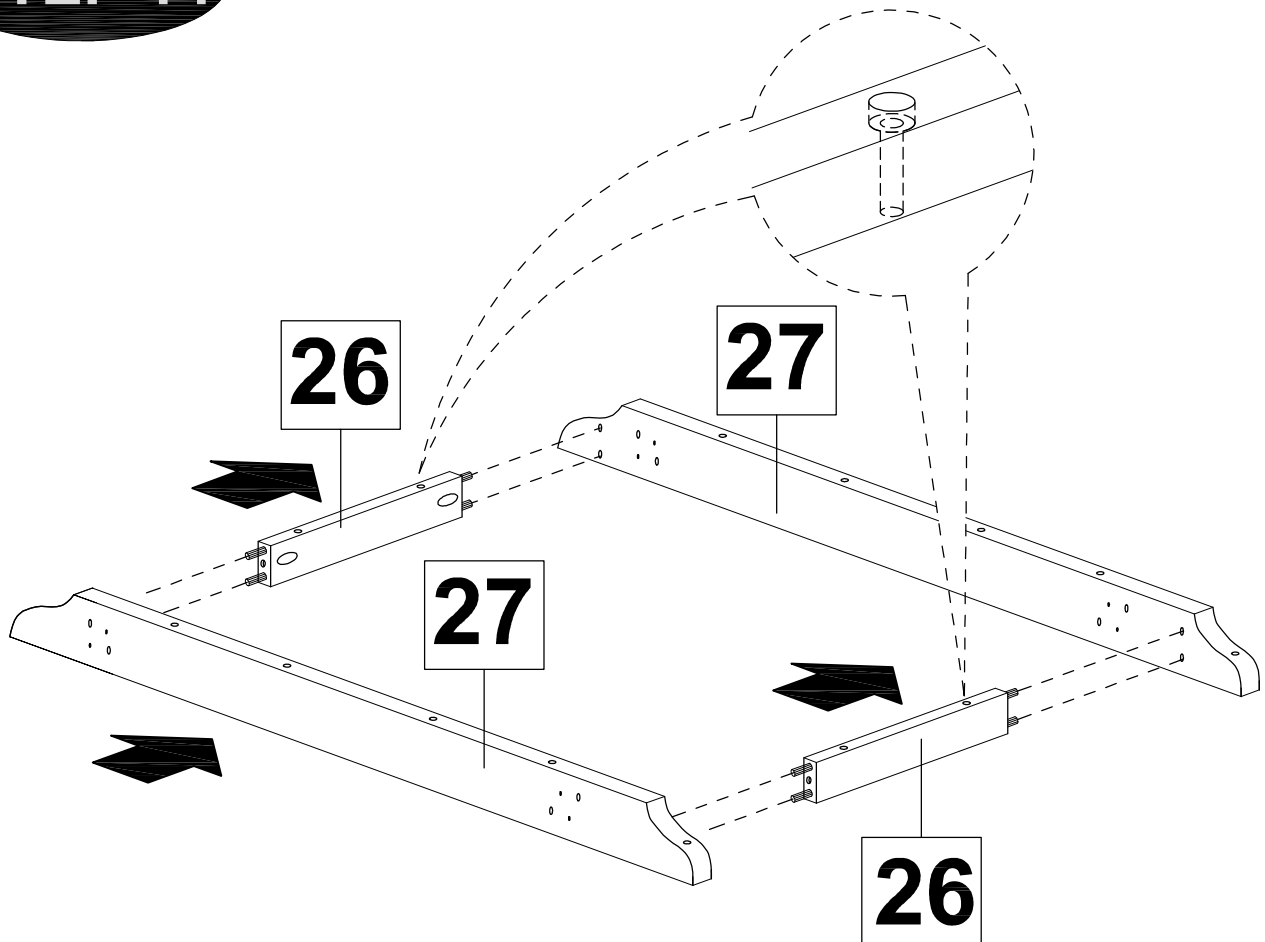
MODEL NAME:

CA 6311-00

STEP 13



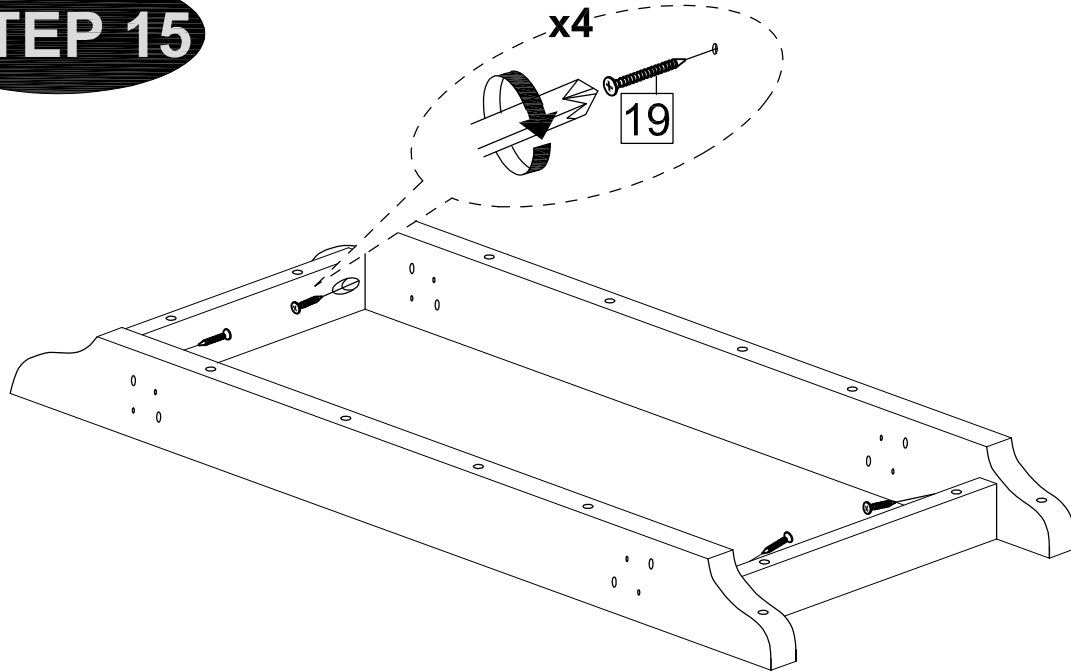
STEP 14



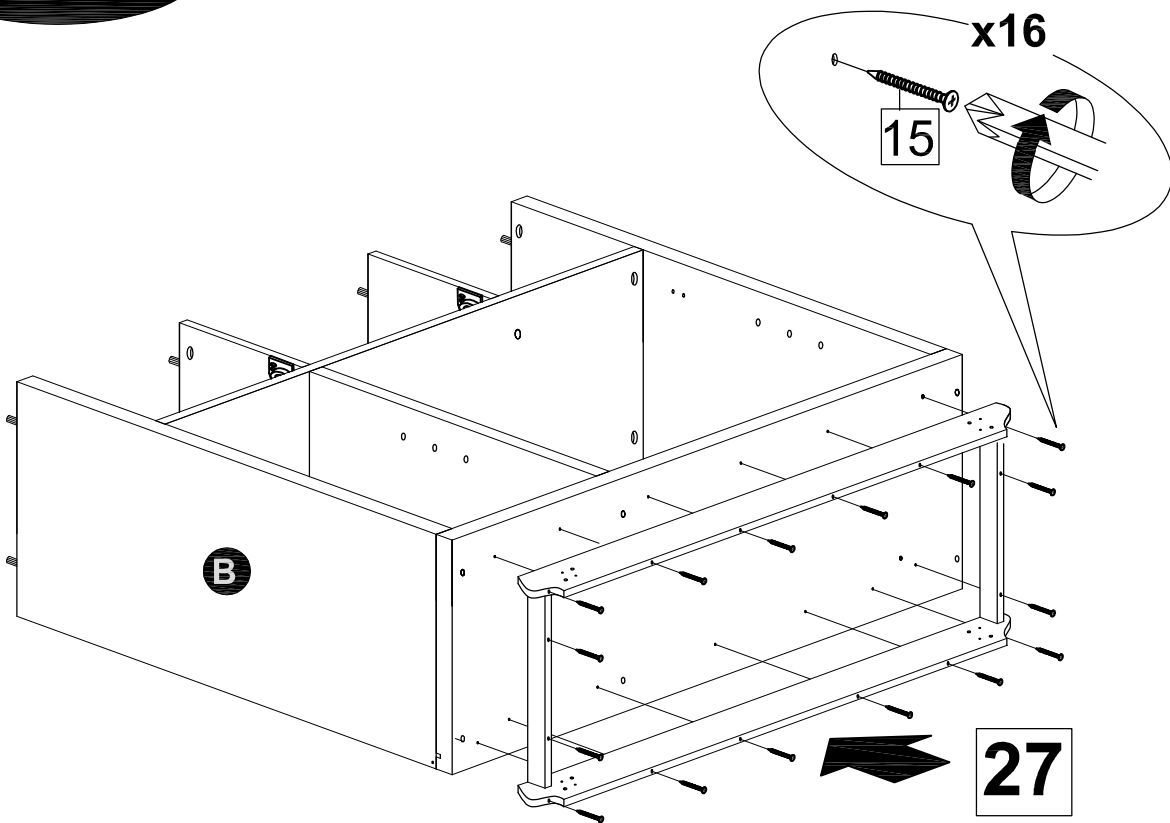
MODEL NAME:

CA 6311-00

STEP 15



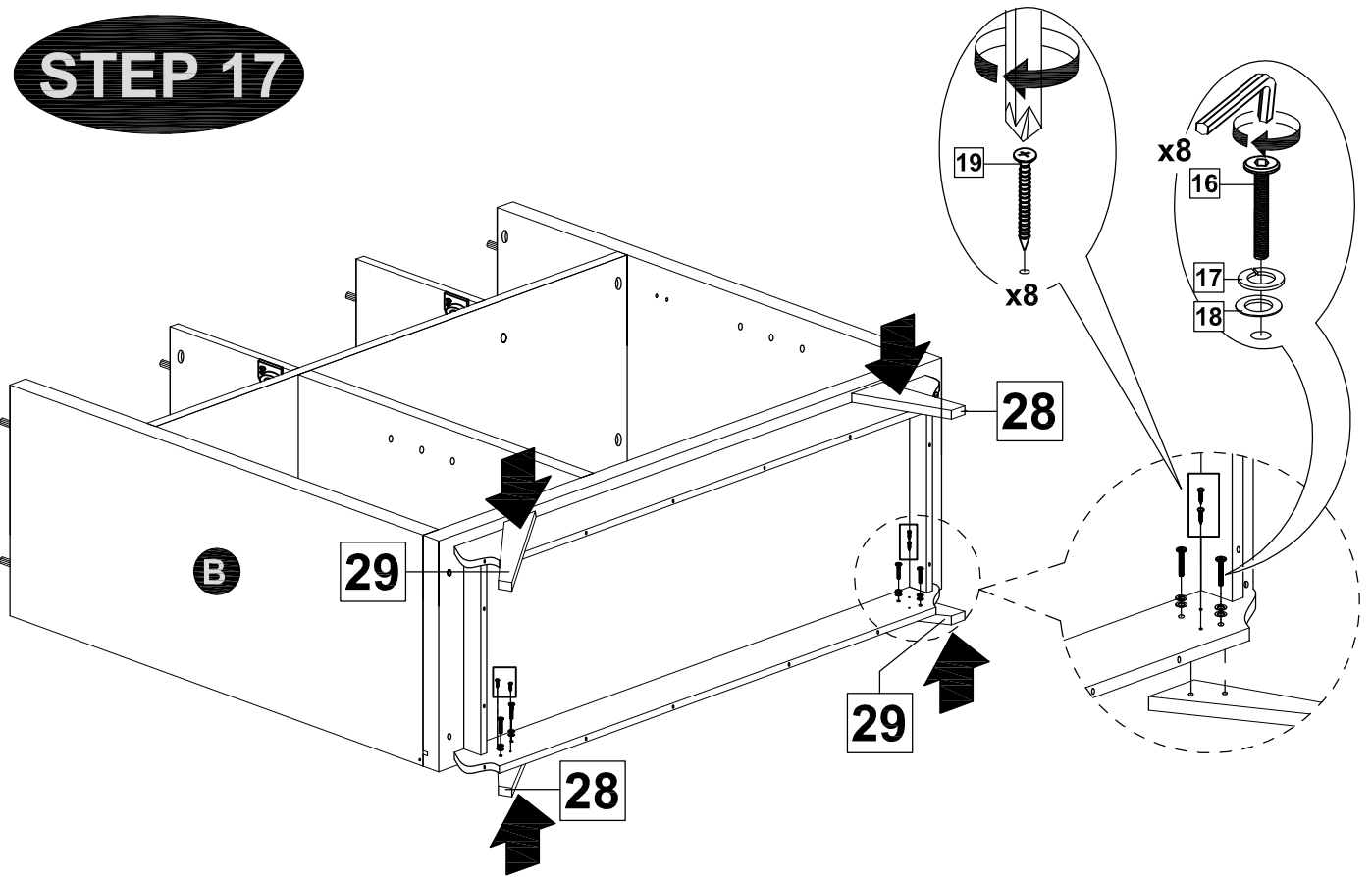
STEP 16



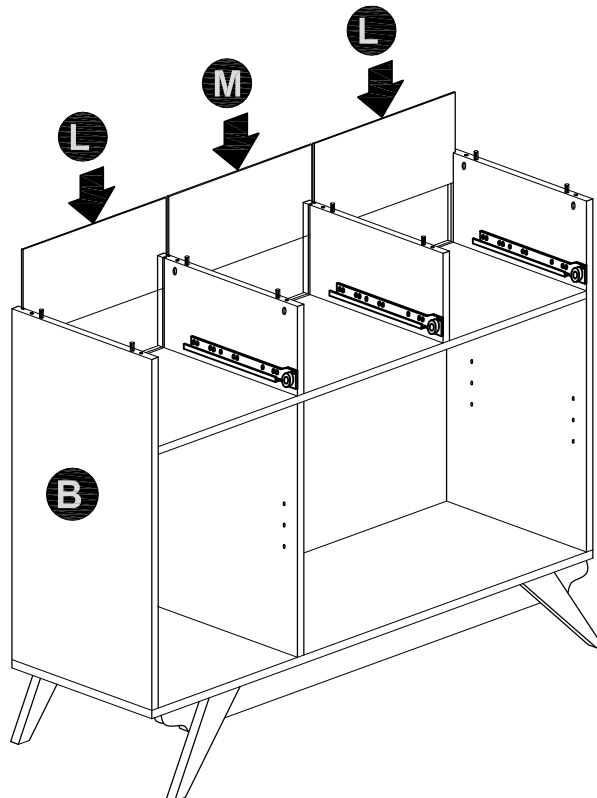
MODEL NAME:

CA 6311-00

STEP 17



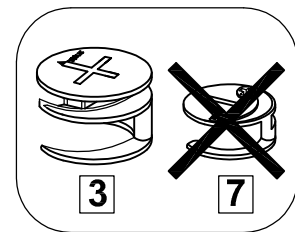
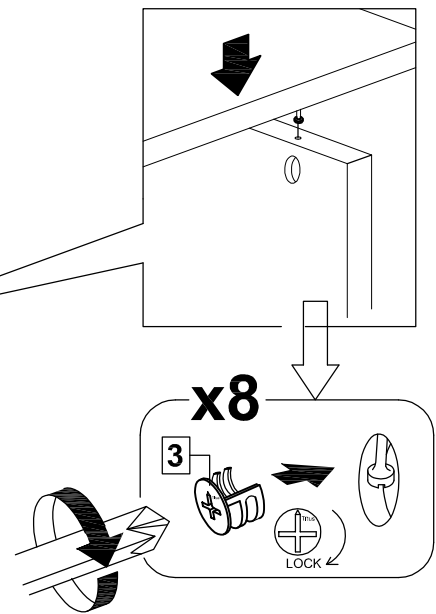
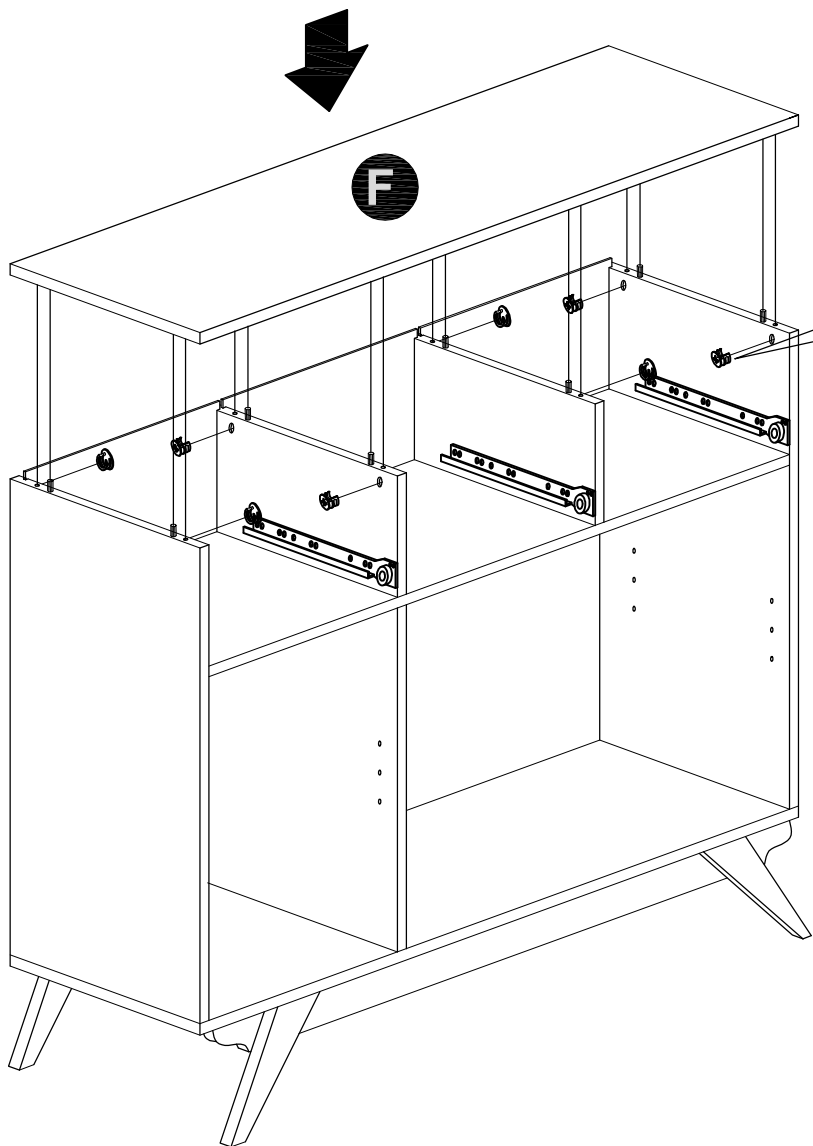
STEP 18



MODEL NAME:

CA 6311-00

STEP 19

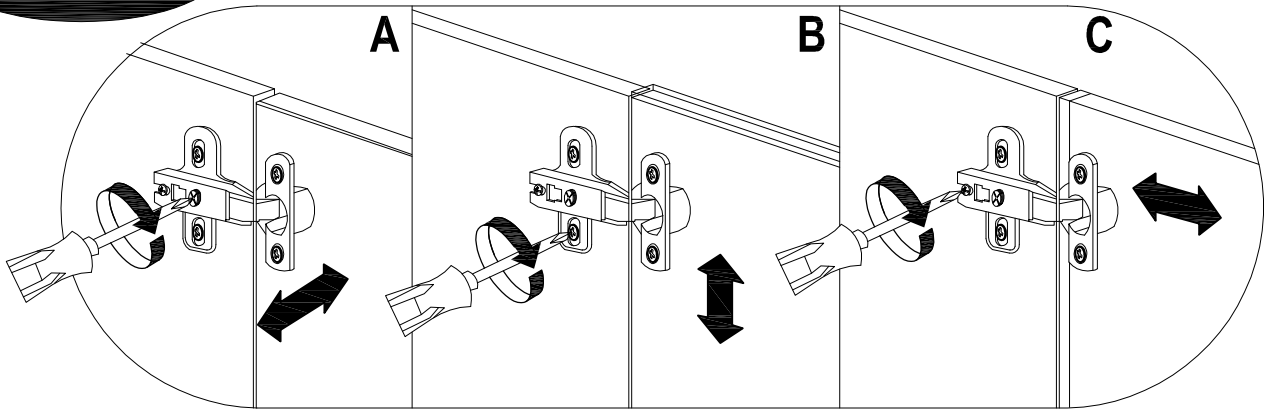


MODEL NAME:

CA 6311-00

STEP 20

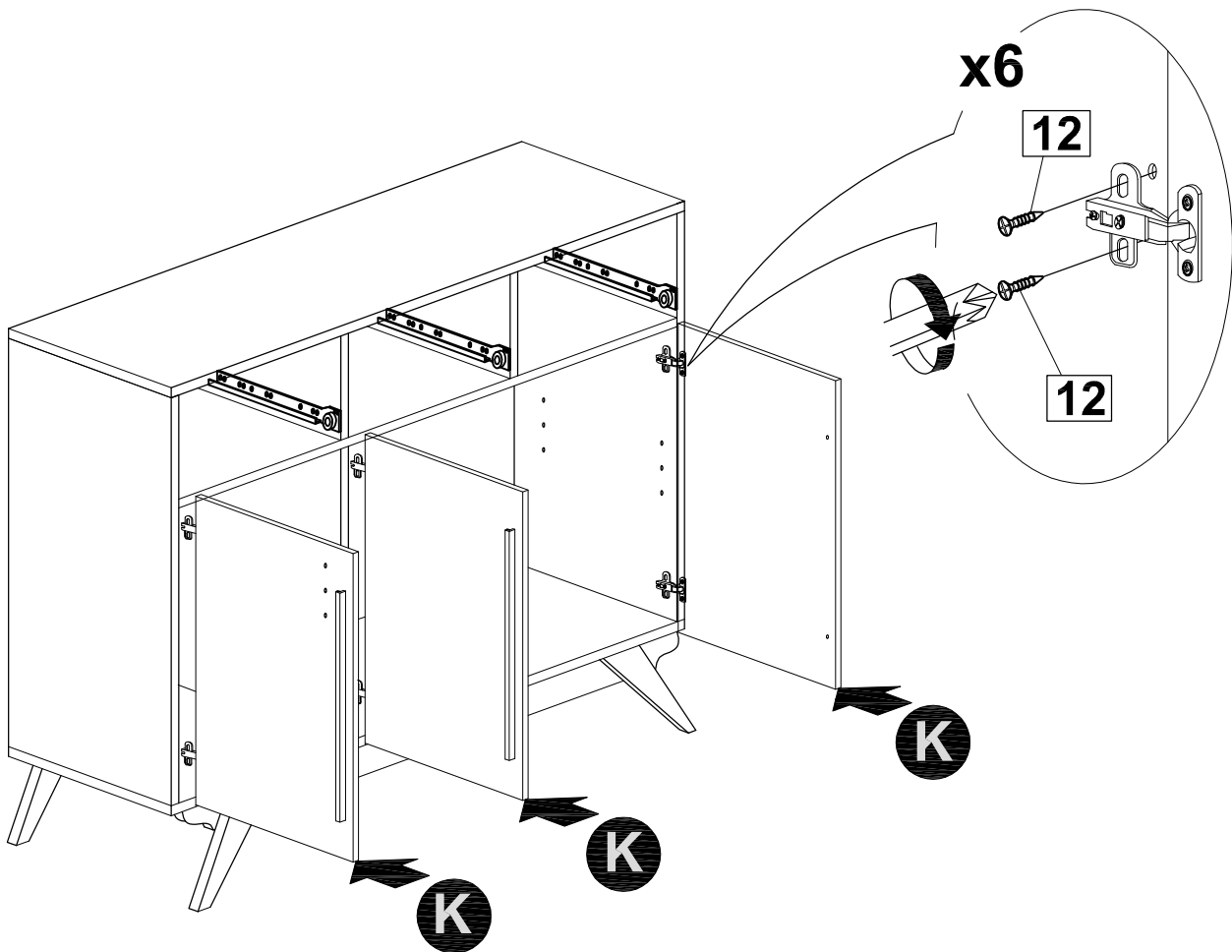
Hinges Adjustment Facilities



A.Lateral adjustment by screw adjusting

B.Vertical adjustment via slot in the mounting plate

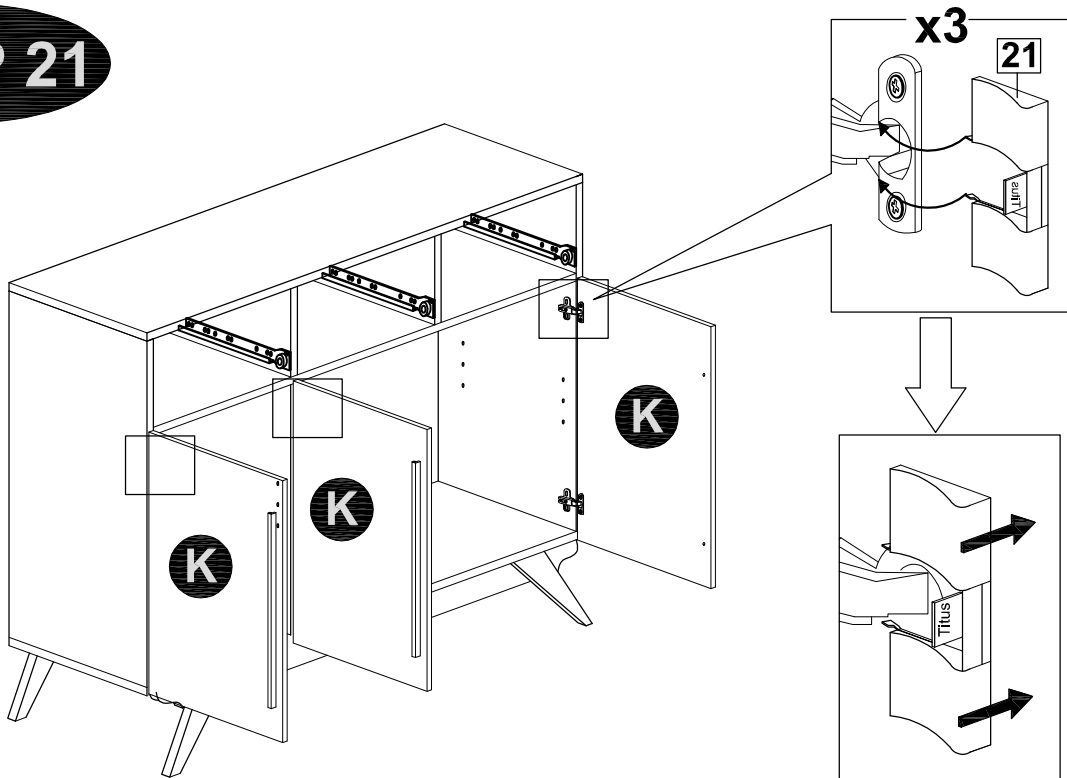
C.Front-to-Back by the slacking the hinge arm mounting screw



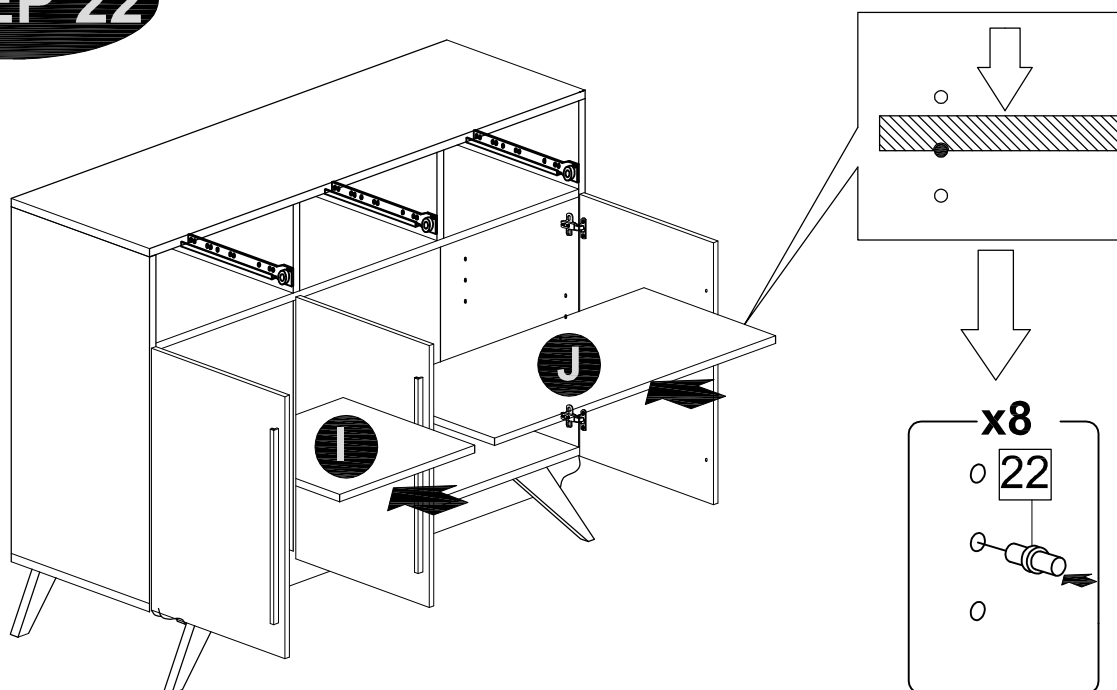
MODEL NAME:

CA 6311-00

STEP 21



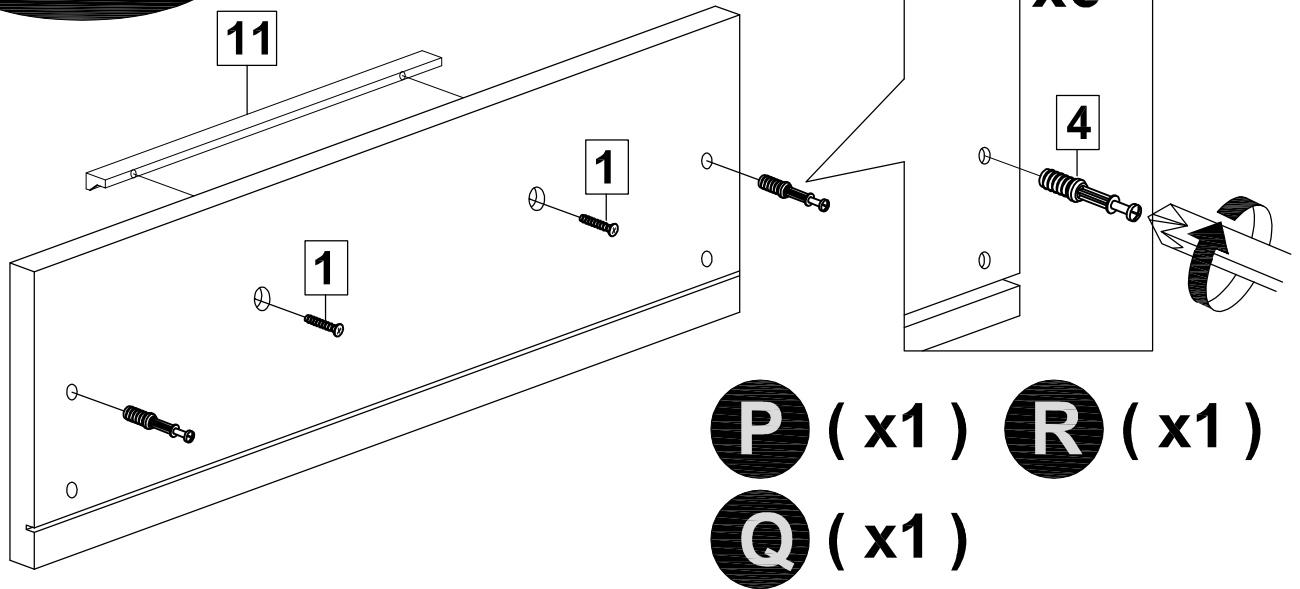
STEP 22



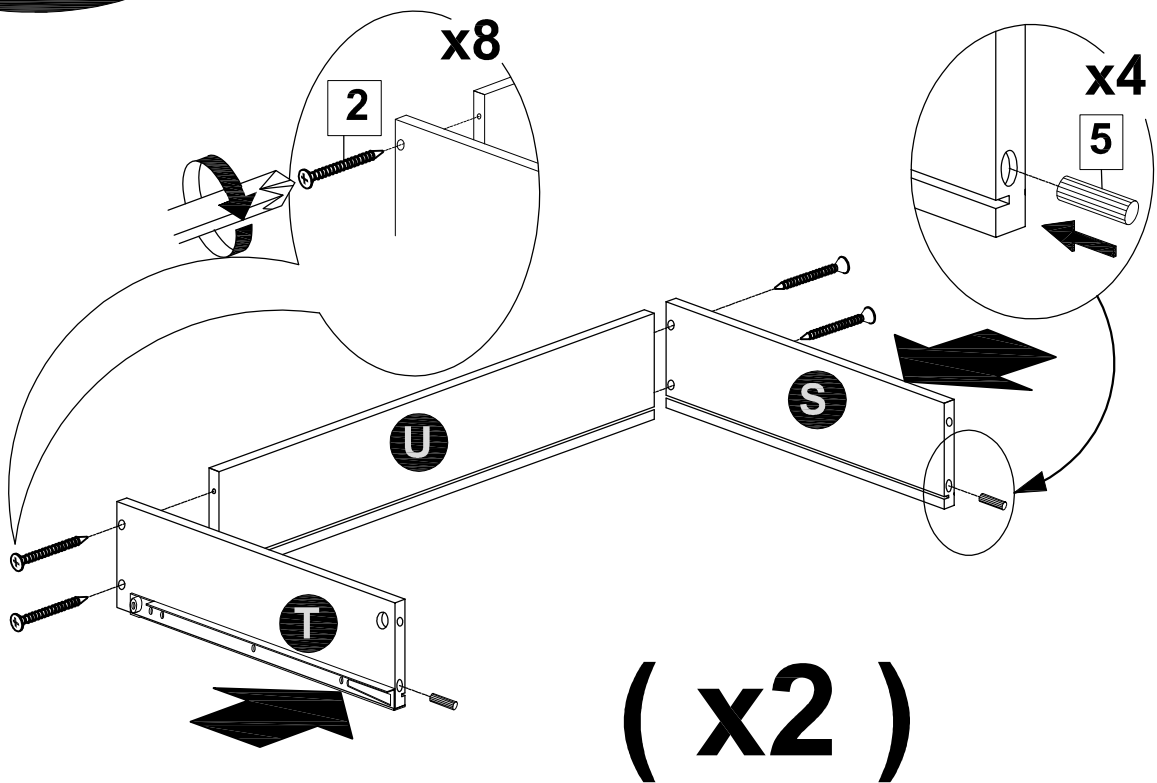
MODEL NAME:

CA 6311-00

STEP 23



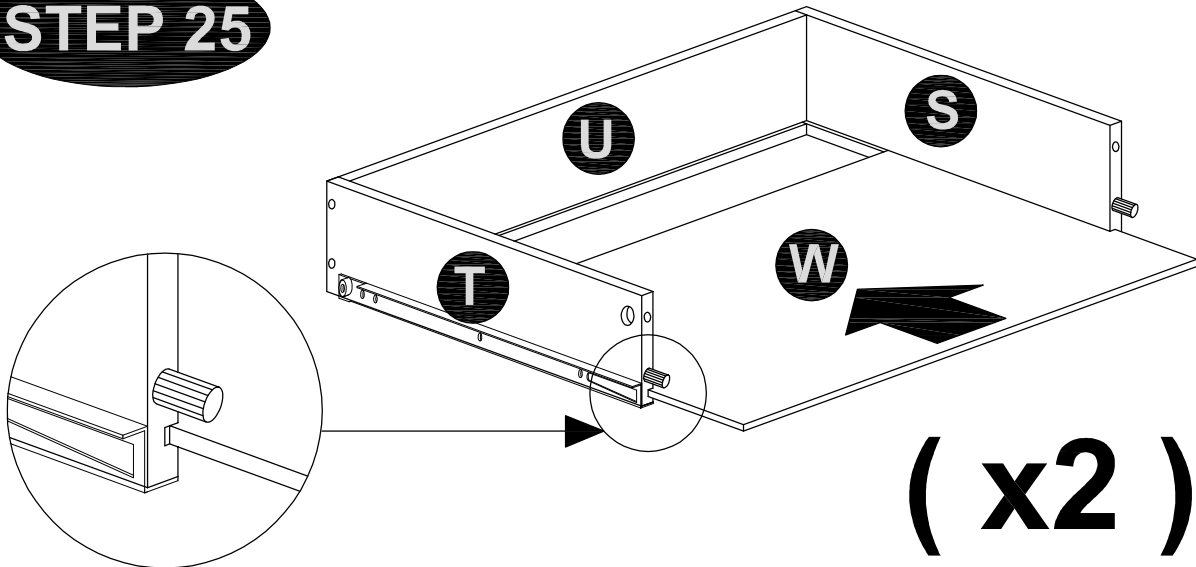
STEP 24



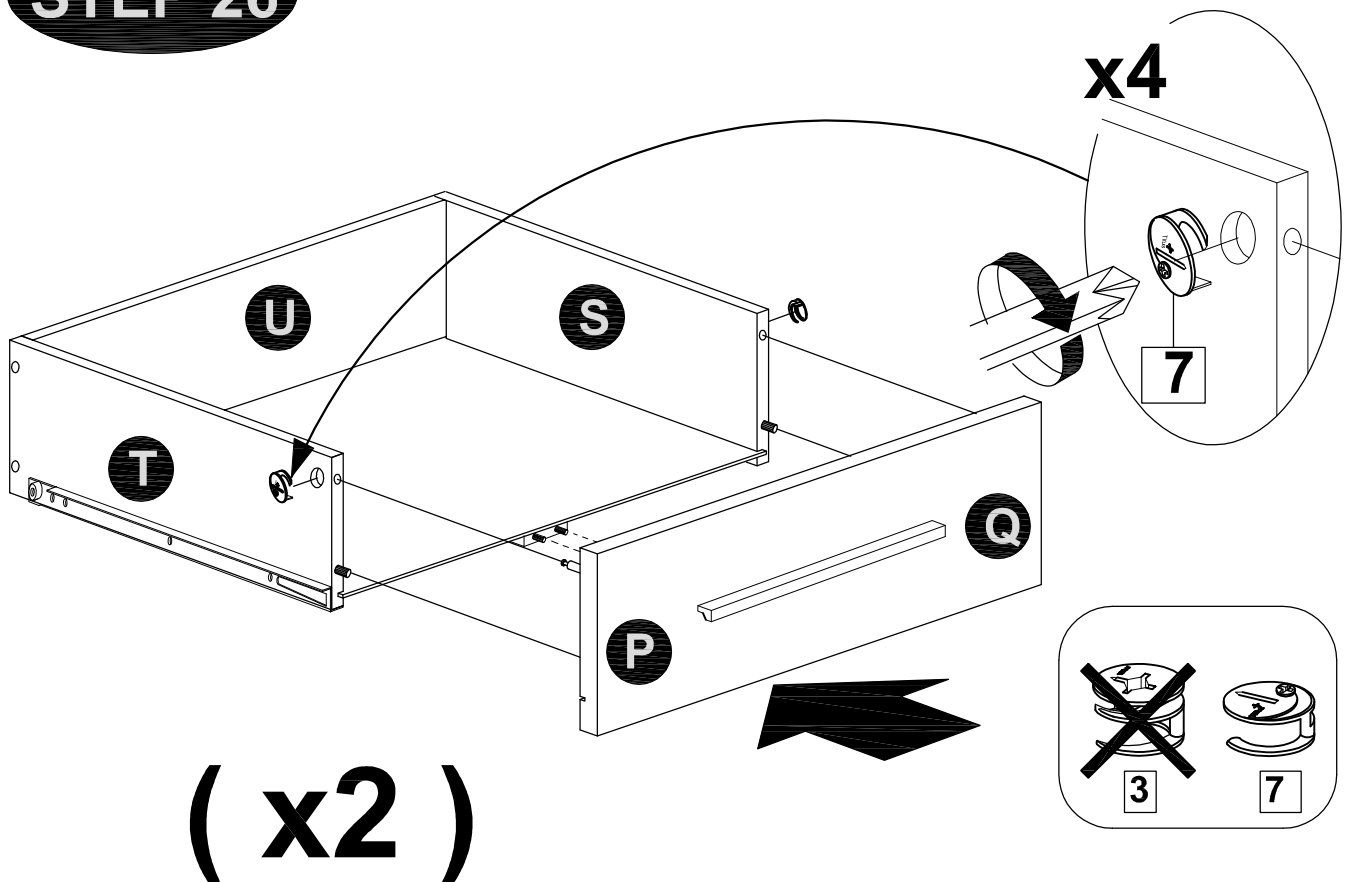
MODEL NAME:

CA 6311-00

STEP 25



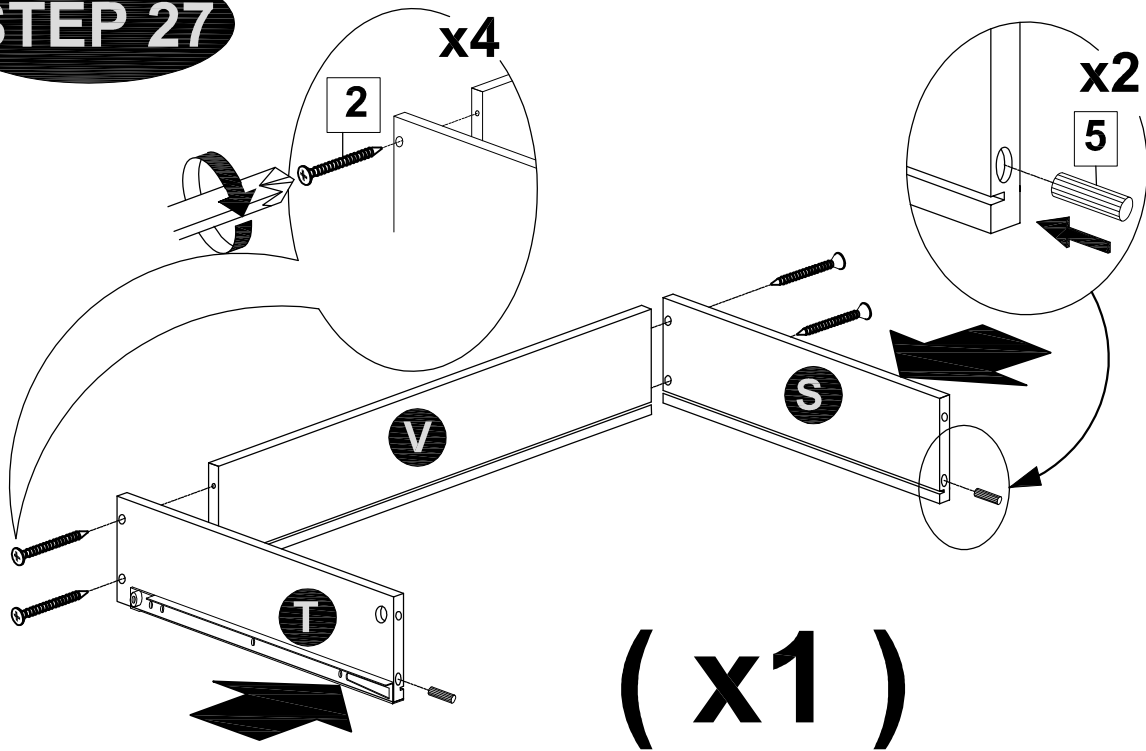
STEP 26



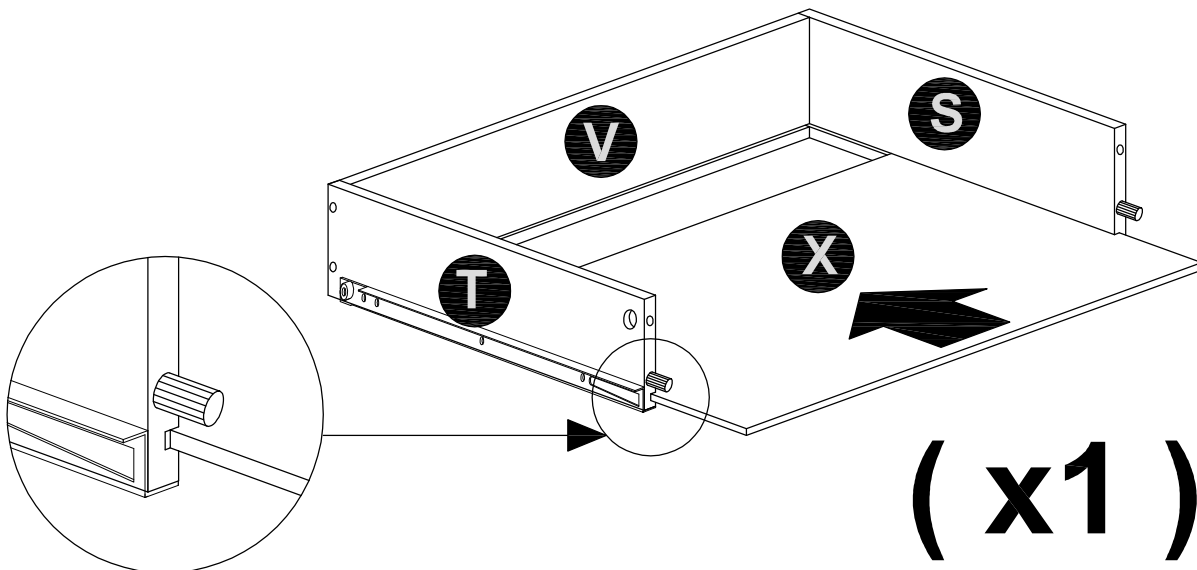
MODEL NAME:

CA 6311-00

STEP 27



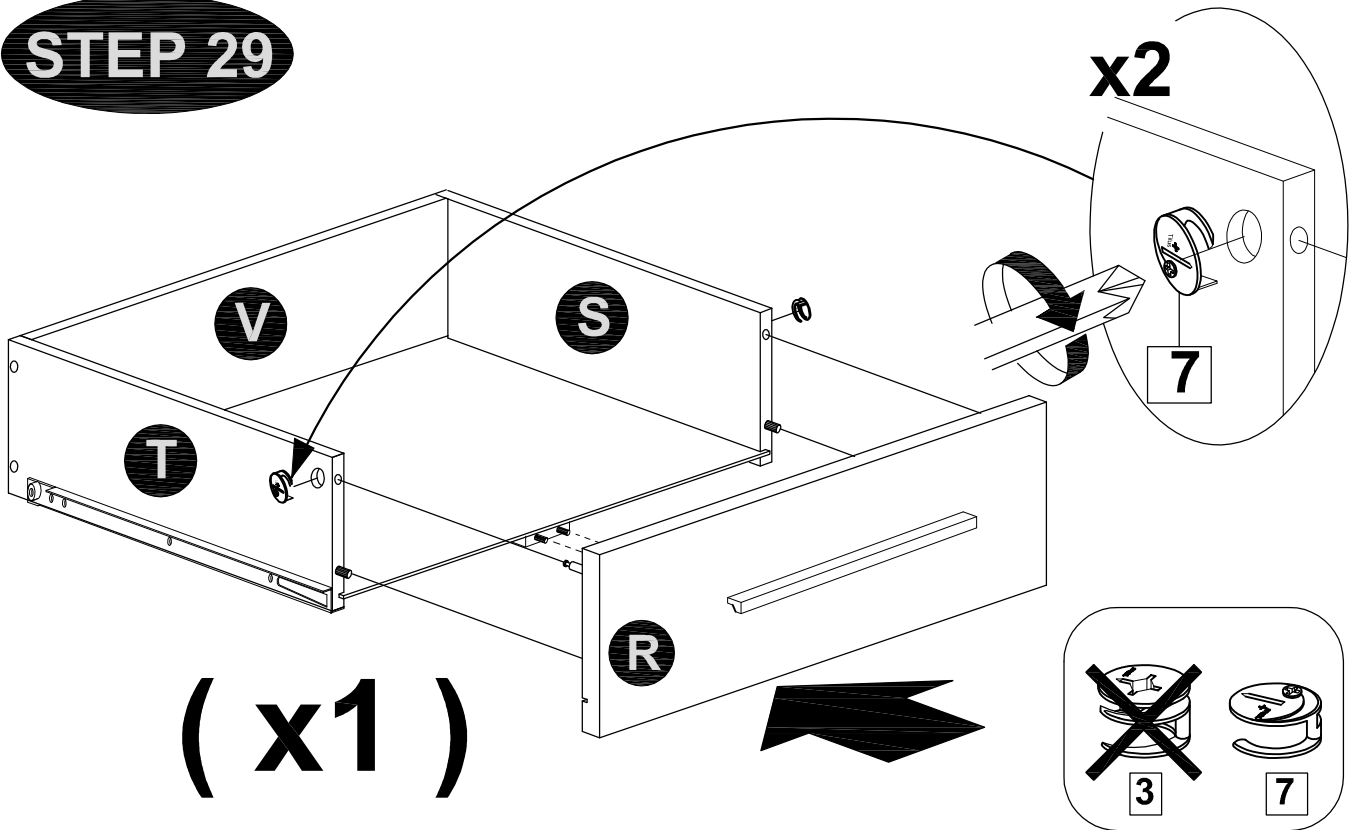
STEP 28



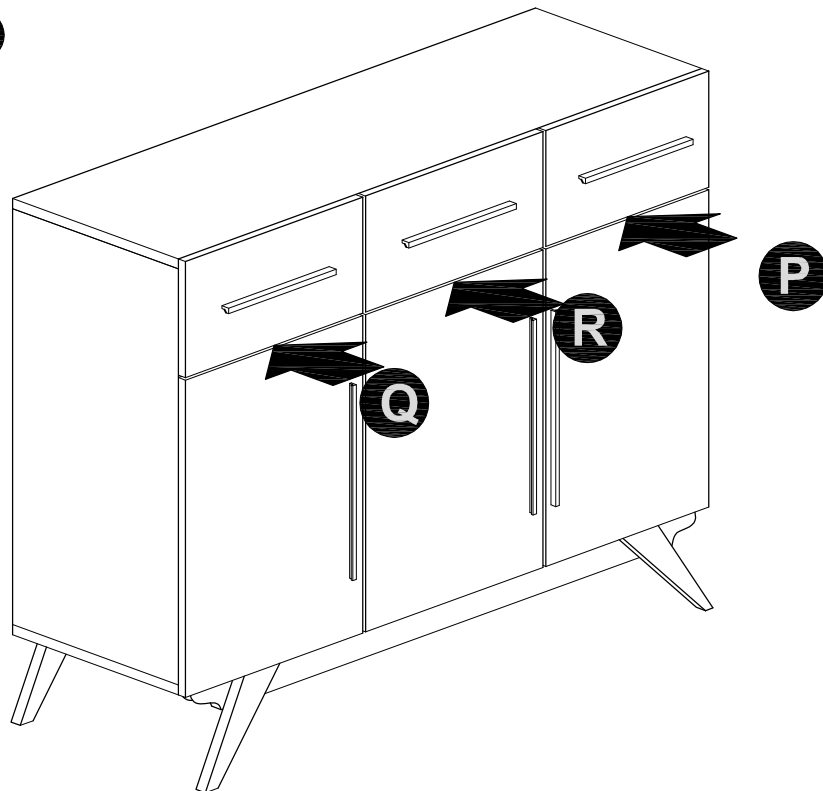
MODEL NAME:

CA 6311-00

STEP 29



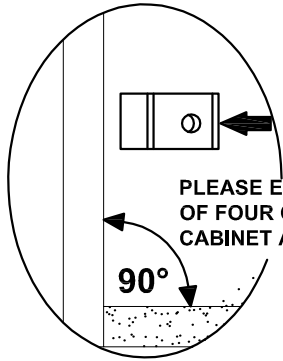
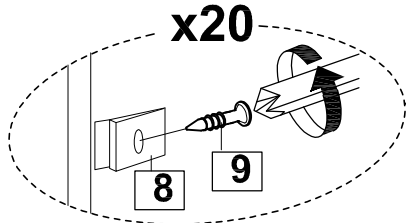
STEP 30



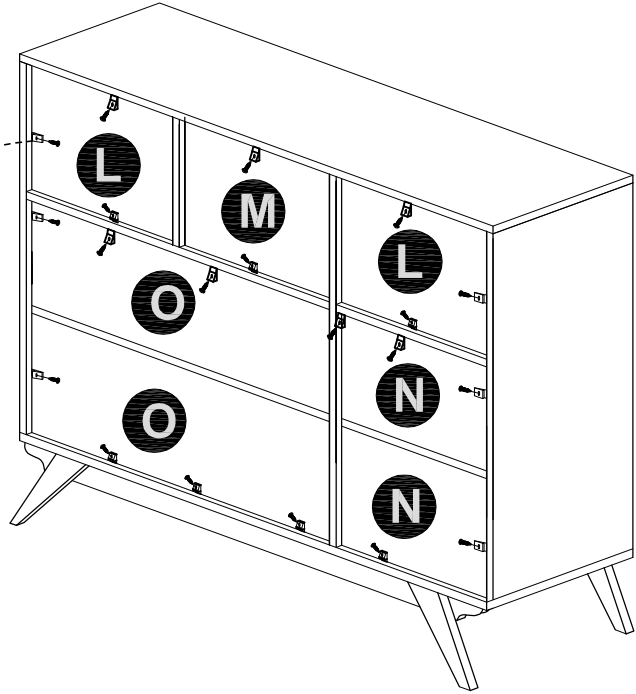
MODEL NAME:

CA 6311-00

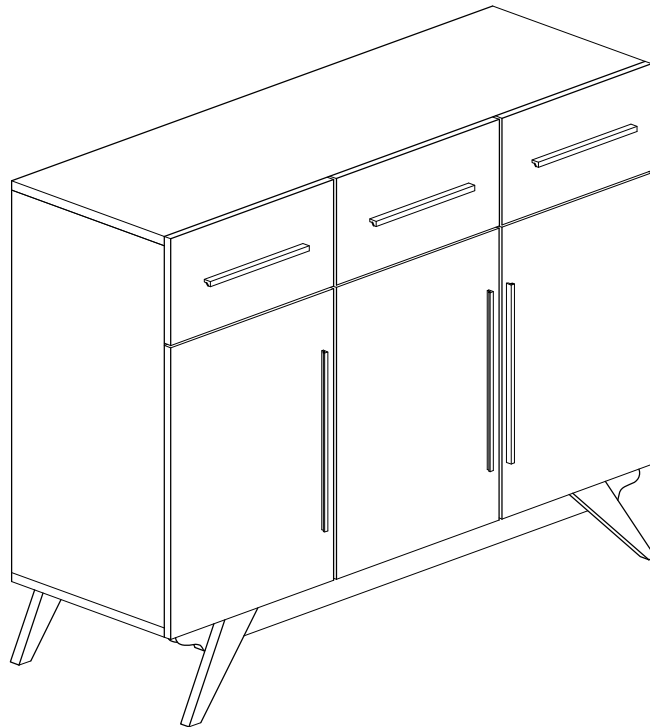
STEP 31



PLEASE ENSURE THAT EACH
OF FOUR CORNERS OF
CABINET ARE SQUARE



STEP 32



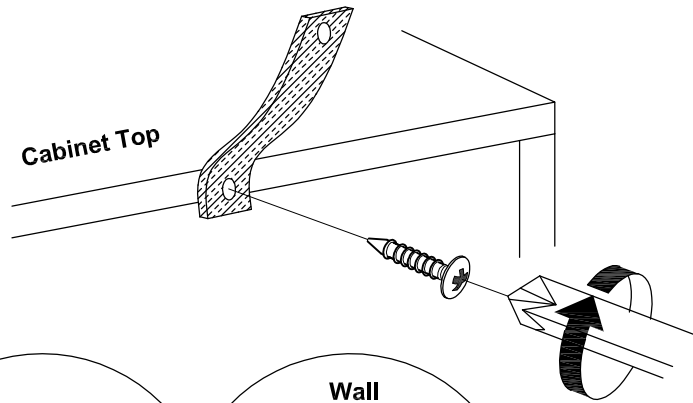
SAFETY WARNING :

It is recommended that you fit the anti-tip bracket to this item to avoid tipping and causing injury.

FITTING OF ANTI-TIP BRACKET

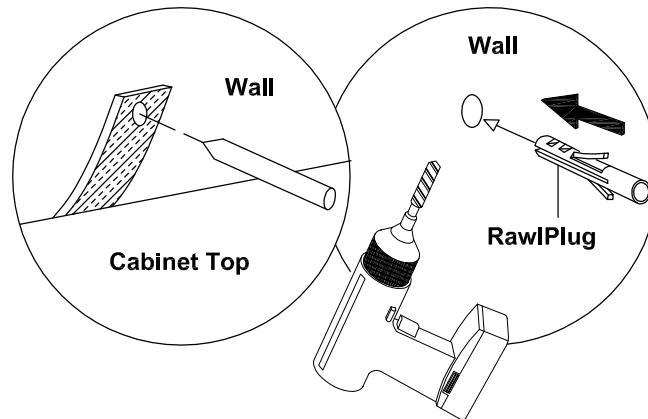
STEP 1 :

Insert screws through bracket into pre-drilled holes in cabinet.



STEP 2 :

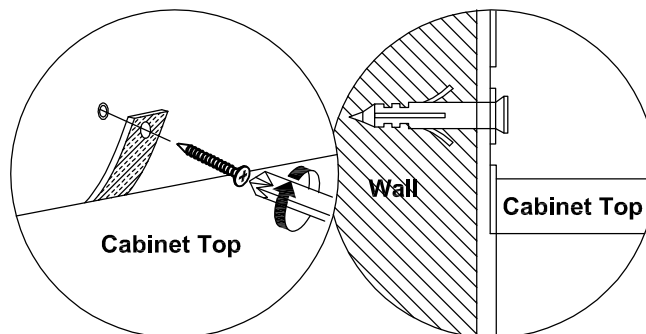
Make a mark on the wall through the bracket.



Drill a hole in the wall and insert the rawlplug.

STEP 3 :

Insert screw through bracket into hole in wall



NOTE : Wall fixings are not supplied with this product as different wall materials require different types of fixing devices (such as Rawl plugs on brick work). You must use fixing devices suitable for the type of wall you intend to mount this product to. Please ensure that the head of any screw used has a diameter greater than the diameter of the mounting hole on the bracket and that the fixing is safe and secure before use.

The screw supplied is to fix the anti-tip strap to the cabinet.

HARDWARE LIST



Anti-Tip Strap - 2pcs



M4 x 16MM - 2pcs